



Sontay®



# 2023

PRICE BOOK

# SONTAY'S Contact Team

Our team will be pleased to hear from you whenever you require any information on our range of products and services.

## Internal Sales & Technical Support

Customers regularly comment on the excellent services they receive from our Internal Sales and Technical Support Team's. Contact them for any enquiry you may have.

### Internal Sales

Telephone: +44 (0) 1732 861200  
E-Mail: sales@sontay.com

### Technical Support

Telephone: +44 (0) 1732 861218  
E-Mail: support@sontay.com

## UK Sales

### Sales Team

We have account managers based locally throughout the UK and worldwide who can visit to discuss account terms, projects and applications.



**Phil Berry**  
UK Sales Director

Tel. +44 (0) 7780 952773  
phil.berry@sontay.com



**Yousaf Waheed**  
UK North Sales Manager

Tel. +44 (0) 7966 814472  
yousaf.waheed@sontay.com



**Ryan Kidd**  
UK South Sales Manager

Tel. +44 (0) 7966 814470  
ryan.kidd@sontay.com



**Donal Lynch**  
Regional Sales Director – Europe & America

Tel. +353 (0) 872523705  
donal.lynch@sontay.com



**Alessandro Cirillo**  
Europe South Sales Manager

Tel. +44 (0)7827 304065  
alessandro.cirillo@sontay.com



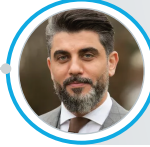
**Tristan Landi**  
France Sales Manager

Tel. +44 (0) 7570 670635  
tristan.landi@sontay.com



**Chris Carson**  
Ireland Graduate Sales Manager

Tel. +44 (0) 7467 653062  
chris.carson@sontay.com



**Ali Jabr**  
Regional Sales Director – MEA & APAC

Tel. +971 5636 222 63  
ali.jabr@sontay.me



**Mohammed Hani**  
Kingdom of Saudi Arabia Sales Manager












Tel. +966 55 61 44 900  
mohammed.hani@sontay.me

## International Sales



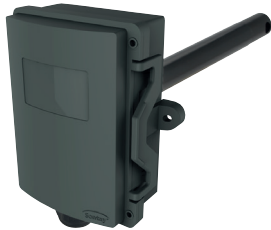
## Contents

Page

				Contents	Page		
	AV	FS	LS	<b>Air &amp; Water Flow</b>			
				AV	Air Velocity Sensors & Probes	4	
				FS	Air & Liquid Flow Switches	4	
	GL	GS	SD	<b>Air Quality &amp; Gas Detection</b>			
				GL	Gas Leak Alarm Systems	8	
				GS	Air Quality, CO <sub>2</sub> , CO & Gas Sensors	6-9	
	GL	GS	SD	SD	Duct Smoke Detector	8	
				<b>Controllers</b>			
				FC	Fan Speed Controllers	10	
	FC		RE	RE	Electric Heater Battery Controllers	10	
				<b>Input/Output Modules</b>			
	IO			IO	Input/Output Modules	11-12	
				<b>Light Level &amp; Occupancy</b>			
	LL		OC	LL	Light Level Controllers & Sensors	12	
				OC	Occupancy Detectors	13	
				<b>Power Monitoring &amp; Power Supplies</b>			
	PM		PS	PM	Energy Analysers & Power Monitoring	13-14	
				PS	Power Output Supplies	14	
				<b>Pressure</b>			
	PA		PL	PA	Air DP Sensors & Switches	15-16	
				PL	Liquid Pressure Sensors & Switches	16-17	
				<b>Smart Communication Protocols</b>			
	SORA		RF-LW	RF-LW	SORA - Sontay Open Range Application	18	
				SC	Smart Sensor - BACnet/Modbus	19-22	
				SC-RC	Smart Room Controller	22	
				PA-DPT-MOD	Smart Air DP Sensor	19	
				SC-FS	Smart Gateways	19	
				ST-IO	Smart I/O Module	21	
				SC-Gateways	Gateways for Air Conditioners	21	
				<b>Temperature &amp; Humidity</b>			
	RH	ST	TT	UI	RH	RH & T Sensors & Humidistats	23-25
					ST	Temperature Thermostats	25
					TT	Temperature Sensors & Pockets	26-35
					UI	User Interfaces & Alarm Annunciators	35
					<b>Valves &amp; Actuators</b>		
	VA	VR	VZ	VA	Damper, Valve & Failsafe Actuators	36	
				VR	Rotary Shoe Valves	36-37	
				VZ	Zone Valves & Actuators	37	
<b>Water Detection &amp; Emergency Products</b>							
	EP	WD	CPS	EP	Emergency Switches & Thermal Links	37	
				WD	Water Detection System & Sensors	38	
				WD-CPS	Condensation Sensors	38	

# Air & Water Flow

## AV-D Single-point Air Velocity Sensor



Part code	Description	€
AV-D	Air Velocity Sensor	259,05
<b>Accessory</b>		
DPA	Duct probe adjustment flange	38,35

## FS-A Air Flow Switch



Part code	Description	€
FS-A	80 x 175mm Paddle Switch	82,82

## AV-W Wind Speed and Direction Sensors



Part code	Description	€
AV-W-S	Wind Speed Sensor	978.80
AV-W-AD	Wind Speed and Direction Sensor	1,566.53

## FS-W Liquid Flow Switch



Part code	Description	€
FS-W	1" BSPT Flow Switch	89,72

## AV Multi-point Air Velocity Probes



Part code	Description	€
AV-EP-100	100mm Multi-point Probe (ABS)	39,23
AV-EP-200	200mm Multi-point Probe (ABS)	46,48
AV-EP-300	300mm Multi-point Probe (ABS)	51,33
AV-EP-400	400mm Multi-point Probe (ABS)	59,77
AV-EP-500	500mm Multi-point Probe (ABS)	62,81
AV-EP-600	600mm Multi-point Probe (ABS)	68,86
AV-MPS-700	To suit duct size of 600-700mm	172,12
AV-MPS-800	To suit duct size of 700-800mm	194,46
AV-MPS-1000	To suit duct size of 750-1000mm	224,04
AV-MPS-1250	To suit duct size of 1000-1250mm	251,80
AV-MPS-1500	To suit duct size of 1250-1500mm	285,59
AV-MPS-1750	To suit duct size of 1500-1750mm	320,05
AV-MPS-2000	To suit duct size of 1750-2000mm	365,93
<b>Accessory</b>		
PA-TUBE-8MM	PVC tube 8mm o/d x 1,5mm wall, 30m	45,45

## LS-712 Hydrostatic Level Transmitter



Part code	Description	€
LS-712-A	0-300mbar, 5 meter cable, 4-20mA output	1391,25
LS-712-A-V	0-300mbar, 5 meter cable, 0-10Vdc output	1391,25
LS-712-B	0-1000mbar, 15 meter cable, 4-20mA output	1160,46
LS-712-B-V	0-1000mbar, 15 meter cable, 0-10Vdc output	1160,46

**LS-CAP** Capacitance Level Sensors



Part code	Description	€
<b>Conducting Liquids</b>		
LS-CAP-1-0.5	0,5m Probe	1104,74
LS-CAP-1-1.0	1,0m Probe	1148,46
LS-CAP-1-1.5	1,5m Probe	1215,16
LS-CAP-1-2.0	2,0m Probe	1270,38
LS-CAP-1-2.5	2,5m Probe	1325,60
LS-CAP-1-3.0	3,0m Probe	1391,17
<b>Non-conducting Liquids</b>		
LS-CAP-2-0.5	0,5m Probe	1060,47
LS-CAP-2-1.0	1,0m Probe	1104,74
LS-CAP-2-1.5	1,5m Probe	1170,88
LS-CAP-2-2.0	2,0m Probe	1226,66
LS-CAP-2-2.5	2,5m Probe	1281,30
LS-CAP-2-3.0	3,0m Probe	1348,00

**LS-UT** Ultrasonic Level Transmitter



Part code	Description	€
LS-UT	Ultrasonic Level Transmitter	1599,49

**LS-541** Float Switch



Part code	Description	€
LS-541	1" BSPT Float Switch (horizontal mount)	170,94

**LS-FL** Liquid Level Float Switches



Part code	Description	€
LS-FL-1H	High Level, Alarm Switch	168,80
LS-FL-1L	Low Level, Alarm Switch	168,80
LS-FL-2H	Emptying Pump, Control Switch	311,76
LS-FL-2L	Filling Pump, Control Switch	311,76
LS-FL-2LH	High & Low Level Alarm Switch	313,97

**LS-S** Compact Liquid Level Switch

LS-S Types

LS-TM



Part code	Description	€
<b>Polypropylene Float Switches</b>		
LS-SN-1	Internal fixing to M16 back nut	71,92
LS-SN-2	1/2" NPT external fixing	63,26
<b>Stainless Steel Float Switches</b>		
LS-SS-1	Internal fixing to M16 back nut	169,15
LS-SS-2	1/2" PF external fixing	204,74
<b>Top Mounting Reversible Float Switch</b>		
LS-TM	Top Mounting Level Switch	89,72

# Air Quality & Gas Sensing

## GS-AQ

### Indoor Air Quality and Temperature Sensor

#### SPACE SENSORS



Part code	Description	€
GS-AQ-S	Space Air Quality & Temperature Sensor	271,89

## GS-AQ-x-UN

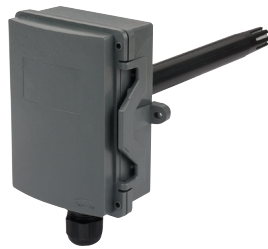
### Single Output Indoor Air Quality Sensors

#### SPACE SENSORS



Part code	Description	€
GS-AQ-S-UN	Space Air Quality Sensor	182,73

#### DUCT SENSORS



Part code	Description	€
GS-AQ-D	Duct Air Quality & Temperature Sensor	303,49

#### DUCT SENSORS



Part code	Description	€
GS-AQ-D-UN	Duct Air Quality Transmitter	211,77

Part code	Description	€
<b>Suffixes (add to part code)</b>		
-T *	Direct resistive temperature output	30,97
-SP *	11-1kΩ/0-10kΩ setpoint	25,28
-MS *	Momentary switch	30,97
-LCD	LCD display	105,25
-TR	Custom temperature range -20 to +50°C	24,52
-5V	Output 0-5Vdc (instead of 0-10Vdc)	0,00
-BLK**	Black space housing	8,30
<b>Accessory</b>		
DECOR	Decorators trim plate	21,25
GASKET	Insulating gasket (pack of 10)	32,20

#### ⚠ Notes:

- \* -T versions use a thermistor element. Please specify type when ordering. When using in space sensors, they are not compensated for self heating.
- \* Only available on Space Sensor Types.

Part code	Description	€
<b>Suffixes (add to part code)</b>		
-T*	Direct resistive temperature output	30,97
-SP*	2-wire, 1-11kΩ/0-10kΩ set point	25,28
-MS*	Momentary switch	30,97
-LCD	LCD display	81,97
-BLK**	Black space housing	8,30
<b>Accessory</b>		
DECOR	Decorators trim plate	21,25
GASKET	Insulating gasket (pack of 10)	32,20

#### ⚠ Notes:

- \* -T versions use a thermistor element. Please specify type when ordering. When using in space sensors, they are not compensated for self heating.
- \* Only available on Space Sensor Types.

## GS-CO2

Carbon Dioxide, Temperature  
and optional RH Sensors

## SPACE SENSORS



Part code	Description	€
GS-CO2-S	Space Mounted CO <sub>2</sub> and T Sensor 0-2000ppm	278,89
GS-CO2-RHT-S	Space Mounted CO <sub>2</sub> , RH and T Sensor 0-2000ppm	399,87
GS-CO2-AQ-S	Space Mounted CO <sub>2</sub> , T and AQ Sensor 0-2000ppm	382,09

## GS-CO2-x-UN

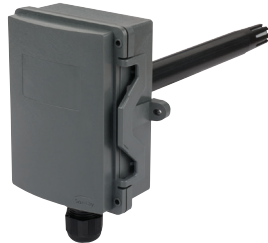
Single Output Carbon  
Dioxide Sensors

## SPACE SENSORS



Part code	Description	€
GS-CO2-S-UN	Space CO <sub>2</sub> Sensor, 0-2000ppm	184,00

## DUCT SENSORS



Part code	Description	€
GS-CO2-D	Duct Mounted CO <sub>2</sub> and T Sensor 0-2000ppm	418,34
GS-CO2-RHT-D	Duct Mounted CO <sub>2</sub> , RH and T Sensor 0-2000ppm	543,79
GS-CO2-AQ-D	Duct Mounted CO <sub>2</sub> , T and AQ Sensor 0-2000ppm	572,01

## DUCT SENSORS



Part code	Description	€
GS-CO2-D-UN	Duct CO <sub>2</sub> Sensor, 0-2000ppm	251,78

Part code	Description	€
<b>Suffixes (add to part code)</b>		
-T*	Direct resistive temperature output	30,97
-SP*	11-1kΩ/0-10kΩ setpoint	25,28
-MS*	Momentary switch	30,97
-LCD	LCD Display	112,61
-LED	3-Colour LED indication for CO <sub>2</sub>	41,39
-5V	Output 0-5Vdc (instead of 0-10Vdc)	27,09
-HR	0 to 5000ppm CO <sub>2</sub> range	18,00
-BLK**	Black space housing	8,30
<b>Accessory</b>		
DECOR	Decorators trim plate	21,25
GASKET	Insulating gasket (pack of 10)	32,20

## ⚠ Notes:

- \* -T versions use a thermistor element. Please specify type when ordering. When using in space sensors, they are not compensated for self heating.
- \* Only available on Space Sensor Types.

Part code	Description	€
<b>Suffixes (add to part code)</b>		
-T *	Direct resistive temperature output	30,97
-SP *	1-11kΩ setpoint	25,28
-MS *	Momentary switch	30,97
-LCD	LCD display	112,61
-LED	3-Colour LED indication for CO <sub>2</sub>	41,39
-BLK**	Black space housing	830
<b>Accessory</b>		
DECOR	Decorators trim plate	21,25
GASKET	Insulating gasket (pack of 10)	32,20

## ⚠ Notes:

- \* -T versions use a thermistor element. Please specify type when ordering. When using in space sensors, they are not compensated for self heating.
- \* Only available on Space Sensor Types.

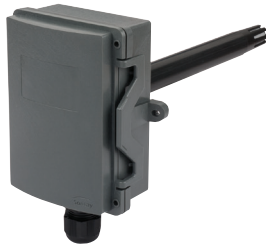
**GS-CO Carbon Monoxide Sensors**

**SPACE SENSORS**



Part code	Description	€
GS-CO-S	Space CO Sensor	322,47

**DUCT SENSORS**



Part code	Description	€
GS-CO-D	Duct CO Sensor	477,29

Part code	Description	€
<b>Suffixes (add to part code)</b>		
-T *	Direct resistive temperature output	30,97
-SP *	11-1kΩ/0-10kΩ setpoint	25,28
-MS *	Momentary switch	30,97
-TR	Custom temperature range -20 to +50°C	24,52
-5V	Output 0-5Vdc (instead of 0-10Vdc)	0,00
-BLK**	Black space housing	8,30
<b>Accessory</b>		
DECOR	Decorators trim plate	21,25
GASKET	Insulating gasket (pack of 10)	32,20

**⚠ Notes:**  
 \* -T versions use a thermistor element. Please specify type when ordering.  
 When using in space sensors, they are not compensated for self heating.  
 \* Only available on Space Sensor Types.

**GL-CO Gas Leak Alarm Systems**



Part code	Description	€
<b>Controllers (DIN-rail mount)</b>		
GL-CO-RFG-361	1-channel, 1 x SPDT	496,29
GL-CO-RFG-651	1-channel, 2 x SPDT	675,74
GL-CO-RFG-652	2-channel, 2 x SPDT	771,18
GL-CO-RFG-653	3-channel, 2 x SPDT	824,10
<b>Options</b>		
GL-CO-RFG-FMK3	Panel door mounting kit for RFG361	84,55
GL-CO-RFG-FMK6	Panel door mounting kit for RFG65x	127,09
GL-CO-RFG-WMK6	Wall mounting kit for RFG65x	127,09
<b>Sensors</b>		
GL-CO-SRS-150	Combustibles Sensor (natural gas)	172,54
GL-CO-SRS-250	Propane/LPG Sensor	172,54
GL-CO-SRS-350	Carbon Monoxide Sensor	179,43

**GS-S Gas Sensors**



Part code	Range	Resolution	€
<b>CO – Carbon Monoxide</b>			
GS-S-CM-100	0 to 100ppm	0-5ppm	645,05
GS-S-CM-1000	0 to 1000ppm	0-5ppm	785,94
<b>NO<sub>2</sub> – Nitrogen Dioxide Sensors</b>			
GS-S-ND10	0 to 10ppm	0,1ppm	555,53
<b>O<sub>2</sub> – Oxygen Sensor</b>			
GS-S-OX25	15 to 25%	0,1%	458,29
<b>SO<sub>2</sub> – Sulphur Dioxide Sensor</b>			
GS-S-SD20	0 to 20ppm	0,5ppm	598,51

**SD-D Duct Smoke Detector**

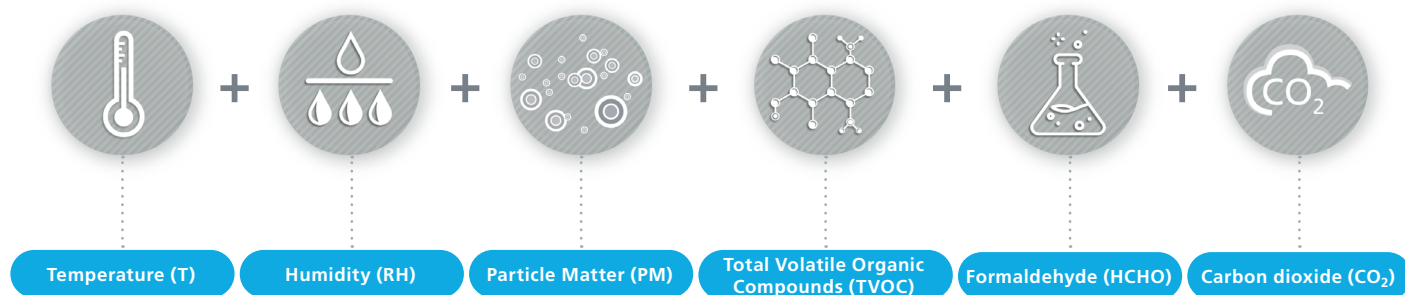


Part code	Description	€
SD-D	Duct Smoke Detector	333,54



# Room Particulate Matter Sensing

## MONITORING PARTICULATE MATTER



For ease of use and indication to building occupants there is a colour LCD display showing the stages from green to red of worsening conditions.

GS-PM-S

Particulate Matter Sensor



Part code	Description	€
GS-PM-S	Wall mount PM2.5, T and RH sensor with 6 colour LCD	321,11

GS-PM-D

Duct Mounted Particulate Matter Sensor



Part code	Description	€
GS-PM-D	Duct PM2.5, CO <sub>2</sub> , TVOC, RH and T sensor	2489,28

GS-IAQ

Indoor Air Quality Monitor



Part code	Description	€
GS-IAQ-S	PM2.5/10, TVOC, HCHO, CO <sub>2</sub> , RH & Temp. Monitor	1143,27

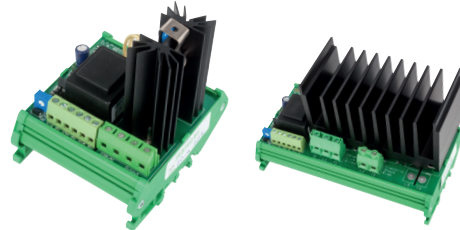
# Controllers

## FC-SDY Manual Speed Controllers for small motors



Part code	Description	€
FC-SDY-1.5	1,5A, 1-phase Controller	83,65
FC-SDY-3	3A, 1-phase Controller	101,18

## RE-1P 2, 4 & 7kW Single-phase Controllers



Part code	Description	Current rating	€
RE-1P-2	2kW Controllers	9A	144,89
RE-1P-4N	4kW Controllers	18A	200,70
RE-1P-7	7kW Controllers	30A	252,58

## FC-ITR Manual Speed Controllers



Part code	Description	€
FC-ITR-3D	3A, type D, 1-phase Controller	125,56
FC-ITR-5D	5A, type D, 1-phase Controller	146,90
FC-ITR-10D	10A, type D, 1-phase Controller	216,19

## RE-3P 12, 18, 27, 36, 57, 86 & 105kW 3-phase Controllers



Part code	Description	Current rating	€
RE-3P-12	DIN-rail 12kW Controllers	16A per phase	253,15
RE-3P-18	DIN-rail 18kW Controllers	25A per phase	348,52
RE-3P-27	Panel Mount 27kW Controllers	37A per phase	684,54
RE-3P-36	Panel Mount 36kW Controllers	50A per phase	823,16
RE-3P-57	Panel Mount 57kW Controllers	80A per phase	993,19
RE-3P-86	Panel Mount 86kW Controllers	120A per Phase	1,224,60
RE-3P-105	Panel Mount 105kW Controllers	164A per Phase	2,721,14

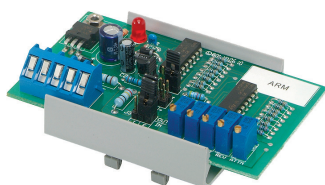
## FC-EVS Fan Speed Controllers



Part code	Description	€
FC-EVS-1.5	1,5A, 1-phase Controller	227,50
FC-EVS-3	3A, 1-phase Controller	242,75
FC-EVS-6	6A, 1-phase Controller	254,98
FC-EVS-10	10A, 1-phase Controller	318,84

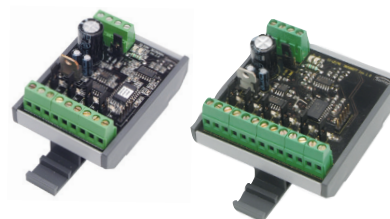
# IO Modules

## IO-A-RM Analogue Rescaling Module



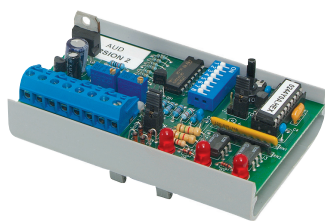
Part code	Description	€
IO-A-RM	Analogue Rescaling Module	158,16

## IO-DIM Digital Input Multiplexers



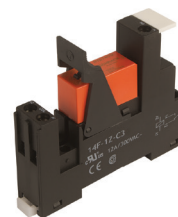
Part code	Description	€
IO-DIM-4	4 x VFC or 24Vac/dc inputs, selectable output	42,62
IO-DIM-6	6 x VFC or 24Vac/dc inputs,selectable output	74,33

## IO-A-UD Raise/Lower to Analogue Module



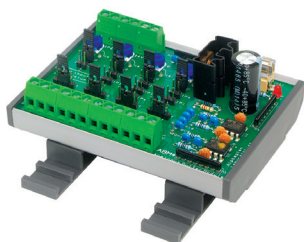
Part code	Description	€
IO-A-UD	R/L to Analogue Module	214,23

## IO-RM1 Single Relay Modules



Part code	Description	€
IO-RM1-12DC	Single Relay, 12Vdc Module	8,08
IO-RM1-24DC	Single Relay, 24Vdc Module	9,21
IO-RM1-24AC	Single Relay, 24Vac Module	9,21
IO-RM1-240AC	Single Relay, 230Vac Module	12,63

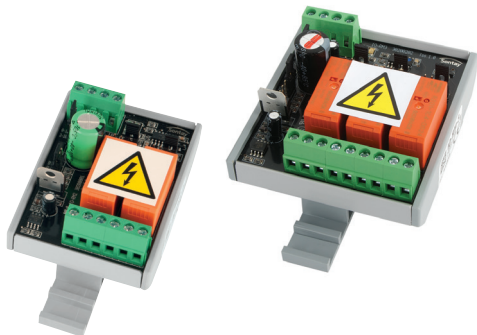
## IO-ABM4 Analogue Override Module



Part code	Description	€
IO-ABM4	4-channel Module	139,60

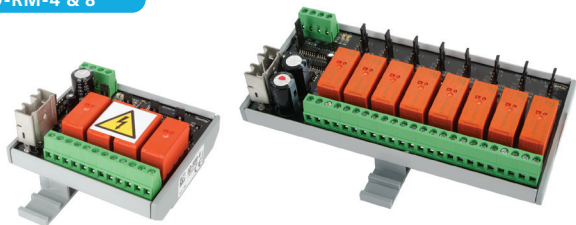
**IO-RM** Relay Modules

**IO-RM-2 & 3**



Part code	Description	€
IO-RM-2	2-stage Relay Module	34,50
IO-RM-3	3-stage Relay Module	57,50

**IO-RM-4 & 8**



Part code	Description	€
IO-RM-4	4-stage Relay Module	76,72
IO-RM-8	8-stage Relay Module	176,56

**IO-RM-A**



Part code	Description	€
IO-RM-A	Adjustable Switching Point Relay Module	45,10

# Lighting Control

**LL** Light Level Sensors

**LL-P-V**



Part code	Description	€
LL-P-V	External, Light Level Sensor	104,04

**LL-C-V**



Part code	Description	€
LL-C-V	Ceiling Mounted Internal, Light Level Sensor	115,61

**LL-C-M** Lighting and Occupancy Controller



Part code	Description	€
LL-C-M	230Vac. flush ceiling mounted light level and occupancy controller	138,21

## Lighting Control

OC

Occupancy Detectors

OC-C-LVN



Part code	Description	€
OC-C-LVN	Ceiling Mounted, PIR Occupancy Detector	72,58

OC-W-LV



Part code	Description	€
OC-W-LV	Wall Mounted, PIR Occupancy Detector	68,46

OC-C-M



Part code	Description	€
OC-C-M	Ceiling Mounted, Microwave Occupancy Detector	96,60

## Power Monitor

PM-CS

Current Switches



Part code	Description	€
<b>Adjustable Setpoint Types</b>		
PM-CS-A-01	0.75 to 150A 30Vac/dc, split core	89,33
PM-CS-A-02	0.5 to 150A 30Vac/dc, solid core	89,33
PM-CS-A-03	0.75 to 150A 240Vac, split core	117,04
<b>Fixed Setpoint Types</b>		
PM-CS-F-01	0.35 to 150A 30Vac/dc, split core	74,33
PM-CS-F-02	0.25 to 150A 30Vac/dc, solid core	43,40
PM-CS-F-03	0.50 to 150A 240Vac, split core	112,96

PM-CTR

Current Transducers



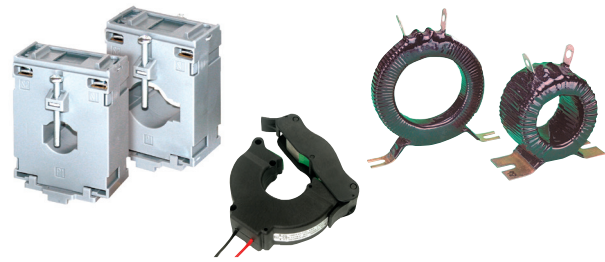
Part code	Description	€
<b>4-20mA Output</b>		
PM-CTR-01	0 to 20A, split core Current Transducer	139,14
PM-CTR-02	0 to 50A, split core Current Transducer	139,14
PM-CTR-03	0 to 100A, split core Current Transducer	139,14
PM-CTR-04	0 to 20A, solid core Current Transducer	65,01
PM-CTR-05	0 to 50A, solid core Current Transducer	65,01
PM-CTR-06	0 to 100A, solid core Current Transducer	65,01
<b>0-5Vdc Output</b>		
PM-CTR-07	0 to 10A, solid core Current Transducer	69,24
PM-CTR-08	0 to 20A, solid core Current Transducer	69,24
PM-CTR-09	0 to 50A, solid core Current Transducer	69,24
PM-CTR-10	0 to 100A, solid core Current Transducer	69,24
<b>0-10Vdc Output</b>		
PM-CTR-11	20/50/100A, split core Current Transducer	107,76

**PM-EM210 Energy Analyser (DIN-rail or panel mounted)**

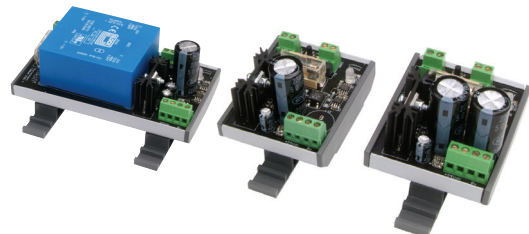

Part code	Description	€
PM-EM210-P	Energy Analyser – Pulsed Output	307,54
PM-EM210-M	Energy Analyser – ModBus Output	408,09
<b>Option (add to part code above)</b>		
-B+D	Annex B+D Certification	227,74

**PM-EM24 Energy Analyser (DIN-rail)**


Part code	Description	€
PM-EM24-P	Energy Analyser - Pulsed Output	559,77
PM-EM24-M	Energy Analyser - Modbus Output	716,21
<b>Option (add to part code above)</b>		
-D	Annex -D Certification	156,40
<b>Accessory</b>		
PM-PMK	Panel door mounting kit	49,54

**PM-CT Current Transformers**


Part code	Description	€
<b>Moulded Types</b>		
PM-CT-M100	100A, 2,5VA Current Transformer	52,91
PM-CT-M150	150A, 2,5VA Current Transformer	52,91
PM-CT-M200	200A, 5VA Current Transformer	62,25
PM-CT-M250	250A, 5VA Current Transformer	62,25
PM-CT-M300	300A, 5VA Current Transformer	62,25
PM-CT-M400	400A, 5VA Current Transformer	62,25
PM-CT-M500	500A, 10VA Current Transformer	73,00
PM-CT-M600	600A, 10VA Current Transformer	73,00
PM-CT-M800	800A, 10VA Current Transformer	73,00
<b>Split Core Types</b>		
PM-CT-100SC	100A, 1VA Current Transformer	112,70
PM-CT-150SC	150A, 1,5VA Current Transformer	112,70
PM-CT-200SC	200A, 2,5VA Current Transformer	112,70
PM-CT-250SC	250A, 2,5VA Current Transformer	112,70
PM-CT-300SC	300A, 2,5VA Current Transformer	112,70
PM-CT-400SC	400A, 5VA Current Transformer	117,32
PM-CT-500SC	500A, 5VA Current Transformer	117,32
PM-CT-600SC	600A, 5VA Current Transformer	117,32
PM-CT-800SC	800A, 5VA Current Transformer	117,32
<b>Ring Types</b>		
PM-CT-R50	50A, 2,5VA Current Transformer	52,91
PM-CT-R100	100A, 10VA Current Transformer	53,29
PM-CT-R150	150A, 15VA Current Transformer	57,50
PM-CT-R250	250A, 15VA Current Transformer	65,56
PM-CT-R300	300A, 15VA Current Transformer	65,56
PM-CT-R400	400A, 15VA Current Transformer	66,74
PM-CT-R500	500A, 15VA Current Transformer	62,12
PM-CT-R800	800A, 15VA Current Transformer	69,03

**PS 24Vdc Output Supplies**


Part code	Description	€
PS-24-24DC-1A	24Vac-24Vdc, 1A floating Supply Module	124,03
PS-24-24DC-E	24Vac-24Vdc, grounded Supply Module	66,15
PS-230-24DC-1A	240Vac-24Vdc, 1A Supply Module	62,20

# Pressure

## PA-699 Multi-range Air DP Sensor



Part code	Description	€
PA-699-01	±30, ±50 & ±100Pa, 4-20mA Multi Range, Bi-directional	276,19
PA-699-02	0 to 30, 50, 100Pa, 4-20mA Multi Range	276,19
PA-699-04	0 to 100, 300, 500Pa, 4-20mA Multi Range	276,19
PA-699-06	0 to 500, 1000, 1600Pa, 4-20mA Multi Range	275,99
PA-699-08	0 to 1600, 2500, 5000Pa, 4-20mA Multi Range	276,19
<b>Suffix (add to above part code)</b>		
-V	0-10V voltage output	0,00
-LCD	Integral LCD option	145,91
<b>Accessories</b>		
DFK	Duct fixing kit	6,88
TEE	Tee piece air pressure (pack of 10)	54,06
PITOT	Aluminium Pitot Tubes (pair)	16,53
PA-TUBE-CLEAR	PVC tube 8mm o/d x 1,5mm wall, 30m reel	45,45
PA-TUBE-RED	Red PVC tube 8mm o/d x 1,5mm wall, 30m reel	45,45
PA-TUBE-BLUE	Blue PVC tube 8mm o/d x 1,5mm wall, 30m reel	45,45
PA-BRK	DIN-rail bracket	14,66
PA-699-CAL *	Calibration certificate	48,87

Notes: \* This option must be specified at time of sensor order. They are built to order and not available ex-stock. A duct fixing kit (DFK) is supplied with the sensor, consisting of 2m of 5mm i/d plastic tubing, 2 x pitot tubes and 4 x fixing screws.

## PA-DPT 3-wire Multi-Range Air Differential Pressure Transmitter



Part code	Description	€
PA-DPT-01	Air DP Sensor 1.5% Acc 0-25/50/100/150/250/300/500&±50Pa	142,08
PA-DPT-01-HA	Air DP Sensor 1% Acc 0-25/50/100/150/250/300/500&±50Pa	210,84
PA-DPT-02	Air DP Sensor 1,5% Acc 0-125/250/500/750/1250/1500/2500&±250Pa	142,08
<b>Suffix (add to above part code)</b>		
-LCD	Integral LCD display	80,48
<b>Accessories</b>		
DFK	Duct fixing kit	6,88
TEE	Tee piece air pressure (pack of 10)	54,06
PITOT	Aluminum Pitot Tubes (Pair)	16,53
PA-TUBE-CLEAR	Clear PVC tube 8mm o/d x 1,5mm wall, 30m reel	45,45
PA-TUBE-RED	Red PVC tube 8mm o/d x 1,5mm wall, 30m reel	45,45
PA-TUBE-BLUE	Blue PVC tube 8mm o/d x 1,5mm wall, 30m reel	45,45

## PA-DPT 2-wire Multi-Range Air Differential Pressure Transmitter, 2-wire



Part code	Description	€
PA-DPT-04	Air DP sensor, 0 - 25/50/100/150/250/300/500Pa & ±50Pa	250,74
PA-DPT-05	Air DP sensor, 0 - 125/250/500/750/1250/1500/2500Pa & ±250Pa	250,74
<b>Suffix (add to above part code)</b>		
-LCD	Integral LCD Display	80,48
<b>Accessories</b>		
DFK	Duct fixing kit	6,88
TEE	Tee piece air pressure (pack of 10)	54,06
PITOT	Aluminum Pitot Tubes (Pair)	16,53
PA-TUBE-CLEAR	Clear PVC tube 8mm o/d x 1,5mm wall, 30m reel	45,45
PA-TUBE-RED	Red PVC tube 8mm o/d x 1,5mm wall, 30m reel	45,45
PA-TUBE-BLUE	Blue PVC tube 8mm o/d x 1,5mm wall, 30m reel	45,45

Notes: A duct fixing kit (DFK) is supplied with the sensor, consisting of 2m of 5mm i/d plastic tubing, 2 x pitot tubes and 4 x fixing screws.

## PA-267 Air DP Sensors



Part code	Description	€
PA-267-25	0 to 25Pa 4-20mA Transmitter	317,78
PA-267-50	0 to 50Pa 4-20mA Transmitter	317,78
PA-267-100	0 to 100Pa 4-20mA Transmitter	317,78
PA-267-300	0 to 300Pa 4-20mA Transmitter	317,78
PA-267-500	0 to 500Pa 4-20mA Transmitter	317,78
PA-267-1000	0 to 1000Pa 4-20mA Transmitter	317,78
PA-267-1600	0 to 1600Pa 4-20mA Transmitter	317,78
PA-267-2500	0 to 2500Pa 4-20mA Transmitter	317,78
PA-267-3000	0 to 3000Pa 4-20mA Transmitter	317,78
<b>Suffix (add to above part code)</b>		
-CAL	Calibration Certificate for PA-267	94,03
-AH	0,4% High Accuracy for PA-267	141,22
-V	Voltage Output (0-10V) for PA-267	0,00
-B	Bi-Directional for PA-267	47,06
-LCD	Integral LCD Display for PA-267	188,32
<b>Accessories</b>		
DFK	Duct fixing kit	7,52
TEE	Tee Piece Air Pressure 6mm Pack of 10	59,11
PA-TUBE-CLEAR	Clear PVC tube 8mm o/d x 1,5mm wall, 30m reel	45,45
PA-TUBE-RED	Red PVC tube 8mm o/d x 1,5mm wall, 30m reel	45,45
PA-TUBE-BLUE	Blue PVC tube 8mm o/d x 1,5mm wall, 30m reel	45,45
PA-TUBE-8MM	PVC tube 8mm o/d x 1,5mm wall, 30m reel	45,45

**PA-DPS**
**Air DP Switch**


Part code	Description	€
<b>IP54 Housing</b>		
PA-DPS-88	20 to 300Pa DP Switch	31,67
PA-DPS-83	50 to 500Pa DP Switch	31,67
PA-DPS-85	200 to 1000Pa DP Switch	31,67
<b>Accessories</b>		
PA-DPS-B	Right angled mount bracket	7,54
<b>IP65 Housing</b>		
PA-DPS-90W	20 to 300Pa DP Switch	67,92
PA-DPS-91W	50 to 500Pa DP Switch	67,92
PA-DPS-92W	100 to 1000Pa DP Switch	67,92
PA-DPS-94W	500 to 2000Pa DP Switch	67,92
<b>Accessories</b>		
DFK	Duct fixing kit	7,52
TEE	Tee piece air pressure (pack of 10)	59,11
PITOT	Aluminium Pitot Tubes (pair)	18,08
PA-TUBE-CLEAR	Clear PVC tube 8mm o/d x 1,5mm wall, 30m reel	45,45
PA-TUBE-RED	Red PVC tube 8mm o/d x 1,5mm wall, 30m reel	45,45
PA-TUBE-BLUE	Blue PVC tube 8mm o/d x 1,5mm wall, 30m reel	45,45

**PL-FD113**
**Liquid DP Switch**


Part code	Description	€
PL-FD113	0.3 to 4.5 bar Liquid DP Switch	129,14
<b>Accessories</b>		
PL-FD113-PIG	Connection Kit	52,77

**PL-625**
**Static Pressure Switch**


Part code	Description	€
PL-625-2.2	0,12 to 2,2 bar Switch	120,85
PL-625-6	1 to 6 bar Switch	120,85

**PL-PSA**
**Liquid Pressure Switch**


Part code	Description	€
PL-PSA-1	-0,75 to +3 bar	62,25
PL-PSA-2	-0,8 to +1,5 bar	62,25
PL-PSA-3	-0,5 to +7 bar	64,12
<b>Accessories</b>		
PL-PIG	2m of 6mm copper tubing + fitting	56,84
BRK	Bracket for PL-PSAx	8,08

**PL-630-A**
**Differential Pressure Switch**


Part code	Description	€
PL-630-A-0.02	6 to 20 mbar Liquid DP Switch	254,69
PL-630-A-0.06	15 to 60 mbar Liquid DP Switch	254,69
PL-630-A-0.2	40 to 200 mbar Liquid DP Switch	254,69
PL-630-A-1	0,15 to 1 bar Liquid DP Switch	214,43
PL-630-A-3	1 to 3 bar Liquid DP Switch	214,43
PL-630-A-5.5	2 to 5,5 bar Liquid DP Switch	214,43
<b>Accessories</b>		
PL-630-PIG	Connection Kit	33,43



## PL-52x

## Static Pressure Sensor



Part code	Description		€
<b>4-20mA Output (2-wire loop powered)</b>			
PL-525-0.1	0 to 100 mbar	Low Pressure	238,34
PL-525-0.2	0 to 200 mbar		238,34
PL-525-0.3	0 to 300 mbar		238,34
PL-525-0.6	0 to 600 mbar		238,34
PL-520-1	0 to 1 bar		242,72
PL-520-1.6	0 to 1,6 bar		242,72
PL-520-2.5	0 to 2,5 bar		242,72
PL-520-4	0 to 4 bar		242,72
PL-520-6	0 to 6 bar		242,72
PL-520-10	0 to 10 bar		242,72
PL-520-16	0 to 16 bar		242,72
PL-520-25	0 to 25 bar		242,72
PL-520-40	0 to 40 bar		242,72
<b>0-10Vdc Output</b>			
PL-525-0.1-V	0 to 100 mbar	Low Pressure	238,34
PL-525-0.2-V	0 to 200 mbar		238,34
PL-525-0.3-V	0 to 300 mbar		238,34
PL-525-0.6-V	0 to 600 mbar		238,34
PL-520-1-V	0 to 1 bar		266,03
PL-520-1.6-V	0 to 1,6 bar		266,03
PL-520-2.5-V	0 to 2,5 bar		266,03
PL-520-4-V	0 to 4 bar		266,03
PL-520-6-V	0 to 6 bar		266,03
PL-520-10-V	0 to 10 bar		266,03
PL-520-16-V	0 to 16 bar		266,03
PL-520-25-V	0 to 25 bar		266,03
PL-520-40-V	0 to 40 bar		266,03
<b>Accessories</b>			
PL-HS	Pressure Transmitter Heat Sink		117,13
PL-525-CAL *	Calibration certificate		69,17
PL-520-CAL *	Calibration certificate		69,17

**Notes:**

1. Heat Sink PL-HS can be used where media has a higher temperature than the sensor allows.
2. \* This option must be specified at the time of sensor order. It is built to order and not available ex-stock.

## PL-652

## Low Range Differential Pressure Sensor



Part code	Description	€
<b>4-20mA Output (3-wire)</b>		
PL-652-0.05	0 to 50 mbar Liquid DP Sensor	525,94
<b>0-10Vdc Output</b>		
PL-652-0.05-V	0,15 to 1 bar Liquid DP Sensor	571,11
<b>Accessory</b>		
PL-652-CAL *	Calibration certificate	60,91

**Notes:**

A mounting bracket is supplied with the sensor.

\* This option must be specified at the time of sensor order. It is built to order and not available ex-stock.

## PL-692

## Differential Pressure Sensor



Part code	Description	€
<b>4-20mA Output (2-wire loop powered)</b>		
PL-692-0.1	0 to 100 mbar Liquid DP Sensor	485,31
PL-692-0.2	0 to 200 mbar Liquid DP Sensor	485,31
PL-692-0.4	0 to 400 mbar Liquid DP Sensor	485,31
PL-692-1	0 to 1 bar Liquid DP Sensor	445,43
PL-692-2.5	0 to 2,5 bar Liquid DP Sensor	445,43
PL-692-4	0 to 4 bar Liquid DP Sensor	445,43
PL-692-6	0 to 6 bar Liquid DP Sensor	445,43
PL-692-10	0 to 10 bar Liquid DP Sensor	445,43
PL-692-16	0 to 16 bar Liquid DP Sensor	445,43
<b>0-10Vdc Output</b>		
PL-692-0.1-V	0 to 100 mbar Liquid DP Sensor	581,34
PL-692-0.2-V	0 to 200 mbar Liquid DP Sensor	581,34
PL-692-0.4-V	0 to 400 mbar Liquid DP Sensor	581,34
PL-692-1-V	0 to 1 bar Liquid DP Sensor	581,34
PL-692-2.5-V	0 to 2,5 bar Liquid DP Sensor	581,34
PL-692-4-V	0 to 4 bar Liquid DP Sensor	581,34
PL-692-6-V	0 to 6 bar Liquid DP Sensor	581,34
PL-692-10-V	0 to 10 bar Liquid DP Sensor	581,34
PL-692-16-V	0 to 16 bar Liquid DP Sensor	581,34
<b>Accessory</b>		
PL-692-CAL *	Calibration certificate	65,72

**Notes:**

A mounting bracket is supplied with the sensor.

\* This option must be specified at the time of sensor order. It is built to order and not available ex-stock.

# Introduction to SORA

## Gateway



Part code	Description	€
RF-LW-HUB-EU868-100	SORA Hub 100 Points European	4029,56
RF-LW-HUB-EU868-250	SORA Hub 250 Points European	5703,18
RF-LW-HUB-EU868-1000	SORA Hub 1000 Points European	7473,93
RF-LW-HUB-EU868-5000	SORA Hub 5000 Points European	9947,12



### Temperature only

Part code	Description	€
RF-LW-T-S	Space mounted temp sensor	153,45
RF-LW-T-D	Duct mounted temp sensor	189,65
RF-LW-T-I	Immersion temp sensor	179,81
RF-LW-T-C	Clamp-on temp sensor	191,60
RF-LW-T-O	Outside air temp sensor	174,75
RF-LW-T-OR	Outside air with rad shield temp sensor	201,77
RF-LW-T-555	Flying lead temp sensor	184,59

### Temperature & Humidity

Part code	Description	€
RF-LW-RH-D	Duct mounted temp and humidity sensor	229,65
RF-LW-RH-W	Wall mounted temp and humidity sensor	243,51
RF-LW-RH-O	Outside temp and humidity sensor	411,96
RF-LW-RH-S	Space mounted temp and humidity sensor	228,24

### Temperature & CO<sub>2</sub>

Part code	Description	€
RF-LW-CO2-T-S	Space mounted temp and CO <sub>2</sub> sensor	349,73

### CO<sub>2</sub> only

Part code	Description	€
RF-LW-CO2-T-S	Space mounted CO <sub>2</sub> sensor	349,73
RF-LW-CO2-T-D	Duct mounted CO <sub>2</sub> sensor	440,17

### Temperature, Humidity & CO<sub>2</sub>

Part code	Description	€
RF-LW-RHT-CO2-S	Space mounted temp and humidity sensor	404,30

### Accessories

Part code	Description	€
RF-AERIAL-PM0.75	Aerial Extension c/w Bulk Head Fitting 0.75 Metre	57,24
RF-AERIAL-PM2	Aerial Extension c/w Bulk Head Fitting 2 Metre	67,73
RF-AERIAL-PM5	Aerial Extension c/w Bulk Head Fitting 5 Metre	125,29
RF-LS14500-S2	SORA Batteries Pack of 10	103,52

## What makes it different to other wireless protocols?



Reliability



Interoperability



Security



Accuracy



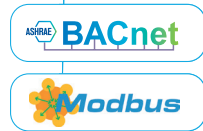
Range



## Smart Communication – Protocols

### PA-DPT

### Multi-Configurable Air DP Sensor



Part code	Description	£
PA-DPT-MOD	Air DP 1% Acc -250 to 2500Pa ModBus	215.68
<b>Accessories</b>		
DFK	Duct fixing kit	6.88
TEE	Tee piece air pressure (pack of 10)	54.06
PA-TUBE-CLEAR	PVC tube 8mm o/d x 1.5mm wall, 30m reel	45.45
PA-TUBE-RED	PVC tube 8mm o/d x 1.5mm wall, 30m reel	45.45
PA-TUBE-BLUE	PVC tube 8mm o/d x 1.5mm wall, 30m reel	45.45

**Note:** A duct fixing kit (DFK) is supplied with the sensor, consisting of 2m (6.56 ft) 5mm (0.20") i/d plastic tubing, 2 x pitot tubes and 4 x fixing screws.

### SC-FS-IOT

### FieldServer BACnet Internet of Things Gateway



Part code	Description	€
SC-FS-IOT-BAC	BACnet IoT Gateway	please ask
SC-FS-IOT-BAC-W	BACnet Internet of Things Gateway (WiFi only)	please ask
SC-FS-IOT-BAC-C	BACnet Internet of Things Gateway (WiFi and cellular)	please ask

### SC-FS-ROUTER-BAC

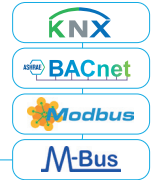
### Fieldserver BACnet Router



Part code	Description	€
SC-FS-ROUTER-BAC2	FieldServer BACnet Router (Single Port)	please ask
SC-FS-ROUTER-BACW	FieldServer Wifi BACnet Router (Single Port)	please ask

### SC-FS-EZ

### Fieldserver EZ Gateways into BACnet/Modbus



Part code	Description		€
SC-FS-EZ1-MBUS-MOD-BAC	EZ Gateway, M-Bus to Modbus/BACnet	16 devices, 500 points	please ask
SC-FS-EZ2-MBUS-MOD-BAC	EZ Gateway, M-Bus to Modbus/BACnet	32 devices, 1000 points	please ask
SC-FS-EZ3-MBUS-MOD-BAC	EZ Gateway, M-Bus to Modbus/BACnet	64 devices, 5000 points	please ask
SC-FS-EZ3-MOD-BAC	EZ Gateway, Modbus to BACnet	500 points	please ask
SC-FS-EZ4-MOD-BAC	EZ Gateway, Modbus to BACnet	1000 points	please ask
SC-FS-EZ1-KNX-BAC	EZ Gateway, KNX to BACnet	500 points	please ask
SC-FS-EZ2-KNX-BAC	EZ Gateway, KNX to BACnet	1000 points	please ask

### SC-FS-QS-2x10-F

### Quickserver 2xx0 Series Full Function Gateways

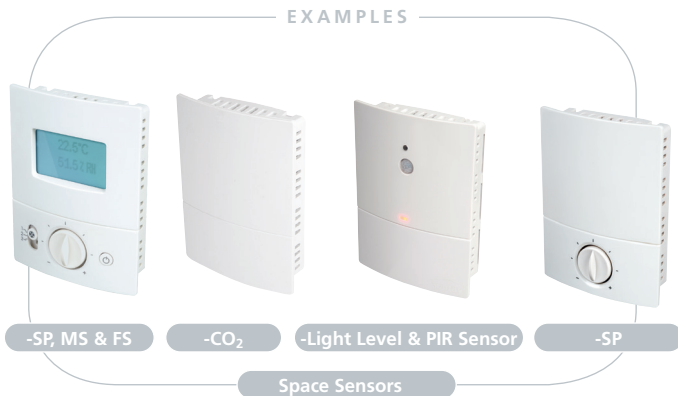


Part code	Description		€
SC-FS-QS-2010-F	Quickserver 2xx0 Series Full Function	250 points	please ask
SC-FS-QS-2210-F	Quickserver 2xx0 Series Full Function	500 points	please ask
SC-FS-QS-2310-F	Quickserver 2xx0 Series Full Function	3000 points	please ask
SC-FS-QS-2410-F	Quickserver 2xx0 Series Full Function	5000 points	please ask

★ Prices for the SC-FS gateways range are Net prices as per manufacturer policy. Discount cannot be applied to these prices.

## SMART COMMUNICATION SENSORS

### SC-S Smart Communication Space Sensor



### SC Smart Communication Plant Sensor



Part code	Description	€
<b>SPACE SENSOR</b>		
SC - S - x x x x x x	Space Temperature Configuration Sensing Options RH/CO <sub>2</sub>	232,95
0	- none	0,00
1	- RH	46,59
2	- CO <sub>2</sub>	108,71
3	- CO <sub>2</sub> and Traffic Light LED	155,30
4	- RH and CO <sub>2</sub>	155,30
5	- RH, CO <sub>2</sub> and Traffic Light LED	201,89
Configuration Sensing Options CO/IAQ		
0	- none	0,00
1	- CO	108,71
2	- IAQ	155,30
3	- CO and IAQ	264,01
Configuration User Indication		
0	- none	0,00
1	- LCD Display	124,24
2	- Light Level Sensor	108,71
3	- PIR Sensor	108,71
4	- Light Level and PIR Sensor	170,83
Configuration Interface Options		
0	- none	0,00
1	- SP	23,30
2	- MS	31,06
4	- SP and MS	49,70
7	- SP, MS and FS	69,89
Configuration Digital Outputs		
0	- none	0,00
1	- 2x DO	38,83
Configuration Analogue Outputs		
0	- none	0,00
1	- 3x AO	38,83

Part code	Description	€
<b>DUCT SENSOR</b>		
SC - D - x x x 0 x x	Duct Temperature and RH Configuration Sensing Options CO <sub>2</sub>	295,07
0	- none	0,00
1	- CO <sub>2</sub>	108,71
2	- CO <sub>2</sub> and Traffic Light LED	155,30
Configuration Sensing Options CO/IAQ		
0	- none	0,00
1	- CO	0,00
2	- IAQ	155,30
3	- CO and IAQ	264,01
Configuration User Indication		
0	- none	0,00
1	- LCD Display	124,24
Configuration Digital Outputs		
0	- none	0,00
1	- 2x DO	38,83
Configuration Analogue Outputs		
0	- none	0,00
1	- 3x AO	38,83
<b>IMMERSION / DUCT TEMPERATURE</b>		
SC - I - 0 0 x 0 x x	Immersion/Duct Temperature Configuration User Indication	248,48
0	- none	0,00
1	- LCD Display	124,24
Configuration User Indication		
0	- none	0,00
1	- 2x DO	38,83
Configuration Analogue Input		
0	- none	0,00
1	- 3x AO	38,83

#### Smart Sensor Addressing Service

We can setup the local MAC address and network settings for your Smart Sensor to support you in reducing installation time. All we need from you are the desired network parameters and MAC addresses with corresponding location identifiers (e.g. room number) for where the sensors will be fitted.

For more information, contact the Technical Support Team.

The sensors are shipped to site fully configured and clearly labelled up, to make the installation and commissioning literally plug and play. This drastically reduces complexity and configuration required on site.

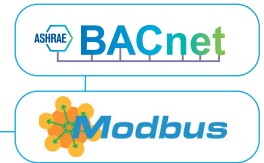
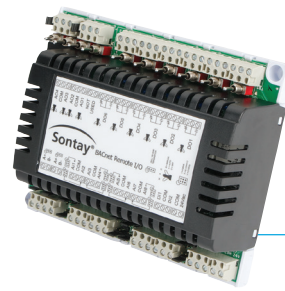
Part code	Description	€
AC-SERVICE-SC	Service Charge Smart Sensor	23.30



Part code	Description	€
<b>PLANT SENSOR</b>		
SC - W - x 0 x 0 x x	Plant Temperature	209,66
	<b>Configuration Sensing Options RH/CO<sub>2</sub></b>	
0	- none	0,00
1	- RH	46,59
	<b>Configuration User Indication</b>	
0	- none	0,00
1	- LCD Display	124,24
2	- Light Level Sensor *	108,71
3	- PIR Sensor *	108,71
4	- Light Level and PIR Sensor *	170,83
	<b>Configuration Digital Outputs</b>	
0	- none	0,00
1	- 2x DO	38,83
	<b>Configuration Analogue Outputs</b>	
0	- none	0,00
1	- 3x AO	38,83
<b>OUTSIDE WALL SENSOR (RAD SHIELD)</b>		
SC - O - x 0 x 0 x x	Outside Temperature (Radiation Shield)	302,84
	<b>Configuration Sensing RH</b>	
0	- none	0,00
1	- RH	46,59
	<b>Configuration User Indication</b>	
0	- none	0,00
1	- LCD Display	124,24
2	- Light Level Sensor*	108,71
3	- PIR sensor*	108,71
4	- Light Level and PIR Sensor*	170,83
	<b>Configuration Digital Outputs</b>	
0	- none	0,00
1	- 2x DO	38,83
	<b>Configuration Analogue Outputs</b>	
0	- none	0,00
1	- 3x AO	38,83

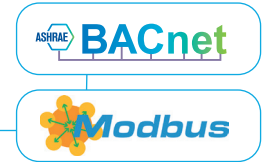
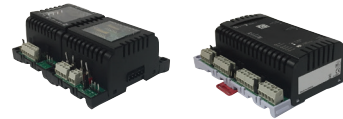
\* Note: Not available for RH configurations

**SC-IO-24 Smart I/O Modules**



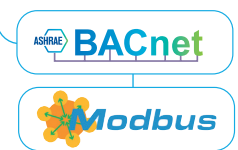
Part code	Description	€
SC-IO-24	Smart Communication IO Module BACnet / ModBus	277,16

**SC-IO-10x Smart Remote IO Modules**



Part code	Description	€
SC-IO-100	Smart Communication IO Module 8 U/I	213,37
SC-IO-102	Smart Communication IO Module 4 U/I, 2 U/O & 2 B/O	240,04

**SC-gateways Gateways for Air Conditioners**



Part code	Description	€
<b>BACnet server gateways for Air Conditioners</b>		
SC-DK-AC-BAC-1	AC Gateway Daikin Domestic line S21 - BACnet	588,37
SC-DK-RC-BAC-1	AC Gateway Daikin Skyair/VAV line P1P2 - BACnet	588,37
SC-TO-RC-BAC-1	AC Gateway Toshiba - BACnet	588,37
SC-ME-AC-BAC-1	AC Gateway Mitsubishi - BACnet	588,37
<b>Modbus slave gateways for Air Conditioners</b>		
SC-DK-AC-MBS-1	AC Gateway Daikin Domestic line S21 - Modbus	495,35
SC-DK-RC-MBS-1	AC Gateway Daikin Skyair/VAV line P1P2 - Modbus	495,35
SC-TO-RC-MBS-1	AC Gateway Toshiba - Modbus	495,35
SC-ME-AC-MBS-1	AC Gateway Mitsubishi - Modbus	495,35



Models	Temp.	RH	PIR	€
● SC-RC1-T-WG	•			330,19
● SC-RC1-T-BB				330,19
○ SC-RC1-T-WB				330,19
● SC-RC1-RHT-WG	•	•		564,09
● SC-RC1-RHT-BB				564,09
○ SC-RC1-RHT-WB				564,09
● SC-RC1-TPIR-WG	•		•	391,89
● SC-RC1-TPIR-BB				391,89
○ SC-RC1-TPIR-WB				391,89
● SC-RC1-RHT-PIR-WG	•	•	•	626,46
● SC-RC1-RHT-PIR-BB				626,46
○ SC-RC1-RHT-PIR-WB				626,46

Models	Temp.	RH	PIR	CO <sub>2</sub>	VOC	€
● SC-RC2-T-WG	•					455,61
● SC-RC2-T-BB						455,61
○ SC-RC2-T-WB						455,61
● SC-RC2-RHT-WG	•	•				691,56
● SC-RC2-RHT-BB						691,56
○ SC-RC2-RHT-WB						691,56
● SC-RC2-RHT-CO <sub>2</sub> -WG	•	•		•		1083,78
● SC-RC2-RHT-CO <sub>2</sub> -BB						1083,78
○ SC-RC2-RHT-CO <sub>2</sub> -WB						1083,78
● SC-RC2-T-PIR-WG	•		•			502,39
● SC-RC2-T-PIR-BB						502,39
○ SC-RC2-T-PIR-WB						502,39
● SC-RC2-RHT-PIR-WG	•	•	•			736,3
● SC-RC2-RHT-PIR-BB						736,3
○ SC-RC2-RHT-PIR-WB						736,3
● SC-RC2-RHT-CO <sub>2</sub> P-WG	•	•		•	•	1299,03
● SC-RC2-RHT-CO <sub>2</sub> P-BB						1299,03
○ SC-RC2-RHT-CO <sub>2</sub> P-WB						1299,03
● SC-RC2-RHT-CO <sub>2</sub> PV-WG	•	•	•	•	•	1361,41
● SC-RC2-RHT-CO <sub>2</sub> PV-BB						1361,41
○ SC-RC2-RHT-CO <sub>2</sub> PV-WB						1361,41

# Relative Humidity & Temperature Sensors

**RH-S****Space Relative Humidity and Temperature Sensor****SPACE SENSORS ±3%**

Part code	Description	€
RH-S	Space RH & T Transmitter (±3%)	175,77
RH-S-EN	Space Enthalpy & Dewpoint Transmitter	276,02

**RH-S-UN****Space Relative Humidity Sensor**

Part code	Description	€
RH-S-UN	Space RH Transmitter Single analogue output	117,21

**SPACE SENSORS ±2%**

Part code	Description	€
RH-S-AH	Space RH & T High Accuracy Transmitter (±2%)	225,48

Part code	Description	€
<b>Suffixes (add to part code)</b>		
-T *	Direct resistive temperature output	25,81
-SP	1-11kΩ setpoint	21,07
-MS	Momentary switch	25,81
-LCD	Integral LCD display	87,70
-BLK**	Black space housing	8,3
<b>Accessories</b>		
DECOR	Decorators trim plate	17,44
GASKET	Insulating gasket (pack of 10)	25,70

**Notes:** 1. \*-T version uses a thermistor element for direct measurement of temperature. Please specify thermistor type when ordering.

Part code	Description	€
<b>Suffixes (add to part code)</b>		
-T*	Direct resistive temperature output	30,97
-SP	11-1kΩ/0-10kΩ setpoint	25,28
-MS	Momentary switch	30,97
-LCD	Integral LCD display	105,25
-TR	Custom temperature output range	24,52
-5V	0 - 5V option	0,00
-BLK**	Black space housing	8,3
<b>Accessories</b>		
DECOR	Decorators trim plate	21,25
GASKET	Insulating gasket (pack of 10)	32,20

**Notes:** 1. \*-T version uses a thermistor element for direct measurement of temperature. Please specify thermistor type when ordering.  
2. RH-6xx-EN versions only output enthalpy and dewpoint values.

**RH-CAL****Calibration**

Part code	Description	€
RH-CAL	3-Point calibration at 30, 50 & 75% RH at 20°C	322,49
RH-CAL-ADP	Additional calibration point, select between 20 & 80%RH	53,73

**RH** Duct, wall, outside and remote probe RH and Temperature Sensor

**DUCT SENSORS**



Part code	Description	€
RH-D	Duct RH & T Transmitter ( $\pm 2\%$ )	220,59
RH-D-AH	Duct RH & T High Accuracy Transmitter ( $\pm 3\%$ )	257,35
RH-D-EN	Duct Enthalpy & Dewpoint Transmitter	294,11

**WALL SENSORS**



Part code	Description	€
RH-W	Wall RH & T Transmitter ( $\pm 3\%$ )	220,59
RH-W-AH	Wall RH & T Transmitter ( $\pm 2\%$ )	257,35
RH-W-EN	Wall Enthalpy & Dewpoint Transmitter	294,11

**OUTSIDE**



Part code	Description	€
RH-O	Outside RH & T Transmitter ( $\pm 3\%$ )	635,99
RH-O-AH	Outside RH & T Transmitter ( $\pm 2\%$ )	682,57
RH-O-EN	Outside Enthalpy & Dewpoint Transmitter	719,36

**REMOTE**



Part code	Description	€
RH-R	Remote probe RH & T Transmitter ( $\pm 3\%$ )	307,95
RH-R-AH	Remote probe T and RH Sensor $\pm 2\%$	360,32
RH-R-EN	Remote probe Enthalpy & Dewpoint Sensor	400,35

Part code	Description	€
<b>Suffixes (add to part code)</b>		
-T *	Direct resistive temperature output	30,97
-LCD	Integral LCD display	105,25
-TR	Custom temperature output range	24,52
<b>Accessory</b>		
DPA	Duct probe adjustment flange (for RH-D only)	38,35

**Notes:** 1. \*-T version uses a thermistor element for direct measurement of temperature. Please specify thermistor type when ordering.  
2. RH-6xx-EN versions only output enthalpy and dewpoint values.

**RH-D-UN** Single Output Duct, wall and outside Relative Humidity Sensor

**DUCT SENSORS**



Part code	Description	€
RH-D-UN	Duct RH Transmitter, Single Analogue Output ( $\pm 3\%$ )	146,48

**WALL SENSORS**



Part code	Description	€
RH-W-UN	Wall RH Transmitter, Single Analogue Output	139,74

**OUTSIDE**



Part code	Description	€
RH-O-UN	OutsideRH Transmitter, Single Analogue Output	423,99

Part code	Description	€
<b>Suffixes (add to part code)</b>		
-T *	Direct resistive temperature output	25,81
-LCD	Integral LCD display	87,70
<b>Accessory</b>		
DPA	Duct probe adjustment flange (for RH-D-UN only)	38,35

**Notes:** 1. \*-T version uses a thermistor element for direct measurement of temperature. Please specify thermistor type when ordering.



**RH-SH****Humidistats**

Part code	Description	€
<b>Room Humidistats</b>		
RH-SH-1R	Single-stage, concealed setpoint adjust.	103,53
RH-SH-1RE	Single-stage, exposed setpoint adjust.	110,42
<b>Duct Humidistats</b>		
RH-SH-1D	Single-stage, concealed setpoint adjust.	289,84
RH-SH-1DE	Single-stage, exposed setpoint adjust.	304,23

**ST****General Purpose Thermostats**

Part code	Description	€
<b>Capillary</b>		
ST-C-01M	50 to 140°C Manual Reset	87,42
<b>Duct</b>		
ST-D-01A	-35 to +35°C Auto Reset	67,85
ST-D-02A	0 to 90°C Auto Reset	67,85
ST-D-03A	-30 to +30°C Auto Reset	110,42
ST-D-04M	0 to +90°C Manual Reset	103,53
<b>Immersion</b>		
ST-I-01A	0 to 120°C Auto Reset	57,96
ST-I-02M	0 to 110°C Manual Reset	68,10
ST-I-03M	20 to 90°C Manual Reset	87,42
<b>Wall</b>		
ST-W-01A	-30 to +30°C Auto Reset	91,99
<b>Strap-on</b>		
ST-S-02A	0 to 90°C Auto Reset	33,13
<b>Accessory</b>		
ST-IMM-PKT	Replacement stainless steel pocket (ST-I range only)	50,60

**ST-FRE****Capillary Frost Thermostats**

Part code	Description	€
ST-FRE-1	Auto reset, 6m capillary, Frost Thermostat	65,21
ST-FRE-2	Manual reset, 6m capillary, Frost Thermostat	67,63
ST-FRE-3	Auto reset, 2m capillary, Frost Thermostat	86,26
ST-FRE-4	Manual reset, 2m capillary, Frost Thermostat	87,42
<b>IP65 Housing and Thermostat</b>		
ST-FRE-1-IP65	Auto reset, 6m capillary, Frost Thermostat	127,69
ST-FRE-2-IP65	Manual reset, 6m capillary, Frost Thermostat	134,55
ST-FRE-3-IP65	Auto reset, 2m capillary, Frost Thermostat	150,69
ST-FRE-4-IP65	Manual reset, 2m capillary, Frost Thermostat	152,98
<b>Accessories</b>		
ST-DFK	Pack of six additional plastic capillary fixing clips	12,63
BRK	Mounting bracket for ST-FREx	8,08

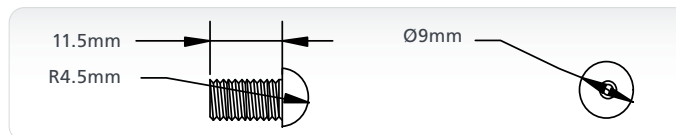
**Note:** All these thermostats include six capillary fixing clips as standard.

**ST-TY****Space Thermostats**

Part code	Description	Range	€
ST-TY92-C1	Heating Thermostat	5 to 35°C	23,68
ST-TY92-C1F	Frost Thermostat	-5 to +15°C	24,05
ST-TY92-C3	Heating or Cooling Thermostat	5 to 35°C	25,59
ST-TY92-C3T	Heating or Cooling Tamperproof	5 to 35°C	28,78



Part code			Description	€		
Stainless Steel	White Plastic	Black Plastic		Stainless Steel	White Plastic	Black Plastic
TT-512-SS-A	TT-512-WP-A	TT-512-BLK-A	10K3A1, Trend, Cylon, Distech, Heatmiser	21,85	19,54	19,54
TT-512-SS-B	TT-512-WP-B	TT-512-BLK-B	10K4A1, Andover, Delta Controls	21,85	19,54	19,54
TT-512-SS-C	TT-512-WP-C	TT-512-BLK-C	20K6A1, Honeywell	24,16	21,85	21,85
TT-512-SS-D	TT-512-WP-D	TT-512-BLK-D	PT100A, Serck	26,45	24,16	24,16
TT-512-SS-E	TT-512-WP-E	TT-512-BLK-E	PT1000A, Cylon	26,45	24,16	24,16
TT-512-SS-F	TT-512-WP-F	TT-512-BLK-F	Ni1000A, Sauter	28,78	26,45	26,45
TT-512-SS-G	TT-512-WP-G	TT-512-BLK-G	Ni1000A/TCR (LAN1), Siemens	28,78	26,45	26,45
TT-512-SS-L	TT-512-WP-L	TT-512-BLK-L	TAC1, TAC	33,35	31,06	31,06
TT-512-SS-M	TT-512-WP-M	TT-512-BLK-M	2.2K3A1, Johnson Controls	21,85	19,54	19,54
TT-512-SS-N	TT-512-WP-N	TT-512-BLK-N	3K3A1, Alerton	21,85	19,54	19,54
TT-512-SS-P	TT-512-WP-P	TT-512-BLK-P	30K6A1, Drayton	24,16	21,85	21,85
TT-512-SS-Q	TT-512-WP-Q	TT-512-BLK-Q	50K6A1, Ambiflex	24,16	21,85	21,85
TT-512-SS-Z	TT-512-WP-Z	TT-512-BLK-Z	10K NTC, Carel	24,16	21,85	21,85
<b>Suffix (add to part code)</b>						
-5M	5m probe length			4,62		
-LSZH	Low Smoke Zero Halogen option			6.31		



## TT-515

## Low Profile Plate Sensors



Part code		Description	€	
Stainless Steel	White Plastic		Stainless Steel	White Plastic
TT-515-SS-A	TT-515-WP-A	10K3A1, Trend, Cylon, Distech, Heatmiser	48,31	28,65
TT-515-SS-B	TT-515-WP-B	10K4A1, Andover, Delta Controls	48,31	28,65
TT-515-SS-C	TT-515-WP-C	20K6A1, Honeywell	50,60	30,94
TT-515-SS-D	TT-515-WP-D	PT100A, Serck	52,91	33,23
TT-515-SS-E	TT-515-WP-E	PT1000A, Cylon	52,91	33,23
TT-515-SS-F	TT-515-WP-F	Ni1000A, Sauter	55,20	35,53
TT-515-SS-G	TT-515-WP-G	Ni1000A/TCR (LAN1), Siemens	55,20	35,53
TT-515-SS-H	TT-515-WP-H	SAT1, Satchwell	59,84	40,15
TT-515-SS-K	TT-515-WP-K	STA1, Landis & Staefa	59,84	40,15
TT-515-SS-L	TT-515-WP-L	TAC1, TAC	59,84	40,15
TT-515-SS-M	TT-515-WP-M	2,2K3A1, Johnson Controls	48,31	28,65
TT-515-SS-N	TT-515-WP-N	3K3A1, Alerton	48,31	28,65
TT-515-SS-P	TT-515-WP-P	30K6A1, Drayton	50,60	30,94
TT-515-SS-Q	TT-515-WP-Q	50K6A1, Ambiflex	50,60	30,94
TT-515-SS-R	TT-515-WP-R	100K6A1, York >40°C	50,60	40,23
TT-515-SS-S	TT-515-WP-S	SAT2, Satchwell	59,84	40,15
TT-515-SS-T	TT-515-WP-T	SAT3, Satchwell	59,84	40,15
TT-515-SS-W	TT-515-WP-W	SIE1, Siebe	50,60	30,94
TT-515-SS-Y	TT-515-WP-Y	STA2, Landis & Staefa	55,20	35,53
TT-515-SS-Z	TT-515-WP-Z	10K NTC, Carel	50,60	30,94
<b>Suffixes (add to part code)</b>				
-LSZH	Low Smoke Zero Halogen option		6.31	

## TT-518

## Thimble Sensors



Part code	Description	€
<b>Passive Output</b>		
TT-518-A	10K3A1, Trend, Cylon, Distech, Heatmiser	21,30
TT-518-B	10K4A1, Andover, Delta Controls	21,30
TT-518-C	20K6A1, Honeywell	23,60
TT-518-D	PT100A, Serck	25,87
TT-518-E	PT1000A, Cylon	25,87
TT-518-F	Ni1000A, Sauter	28,20
TT-518-G	Ni1000A/TCR (LAN1), Siemens	28,20
TT-518-H	SAT1, Satchwell	32,77
TT-518-K	STA1, Landis & Staefa	32,77
TT-518-L	TAC1, TAC	32,77
TT-518-M	2,2K3A1, Johnson Controls	21,30
TT-518-N	3K3A1, Alerton	21,30
TT-518-P	30K6A1, Drayton	23,60
TT-518-Q	50K6A1, Ambiflex	23,60
TT-518-S	SAT2, Satchwell	32,77
TT-518-T	SAT3, Satchwell	32,77
TT-518-W	SIE1, Siebe	23,60
TT-518-Y	STA2, Landis & Staefa	28,20
TT-518-Z	10K NTC, Carel	23,60
<b>Active Output</b>		
TT-518-CVO	4-20mA/0-10Vdc selectable output * <b>Output ranges:</b> -10 to +40°C or -10 to +110°C (selectable)	103,53
TT-518-CVO-C	4-20mA/0-10Vdc selectable output (custom temp. scaling) *, Scaled to customer specification in the range of -10 to +60°C	124,80
<b>Suffixes (add to part code)</b>		
-AL	Aluminium thimble	21,29
-SS	Stainless steel thimble	46,58
-BLK	Black Thimble	27,62
-BR	Brass thimble	0,00
-5M	5m cable length	4,60
-LSZH	Low Smoke Zero Halogen option	6.31

**Notes:**

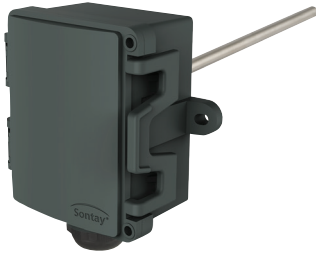
A calibration certificate is available on CVO Types see page 34.

If no colour is specified, standard off-white thimble will be supplied.

\* These units are supplied with the transmitter in the plant housing.



**Note for ALL sensors with CVO output options:**  
The stated ambient range overrides any CVO output details.

**TT-D Duct Sensors**

**TT-DA Duct Averaging Sensors**


Part code	Description	€
<b>Passive Output</b>		
TT-D-A	10K3A1, Trend, Cylon, Distech	21,85
TT-D-B	10K4A1, Andover, Delta Controls	21,85
TT-D-C	20K6A1, Honeywell	21,85
TT-D-D	PT100A, Serck	24,16
TT-D-E	PT1000A, Cylon	26,45
TT-D-F	Ni1000A, Sauter	26,45
TT-D-G	Ni1000A/TCR (LAN1), Siemens	28,78
TT-D-H	SAT1, Satchwell	32,59
TT-D-K	STA1, Landis & Staefa	33,35
TT-D-L	TAC1, TAC	33,35
TT-D-M	2,2K3A1, Johnson Controls	24,16
TT-D-N	3K3A1, Alerton	21,85
TT-D-P	30K6A1, Drayton	21,85
TT-D-Q	50K6A1	24,16
TT-D-R	100K6A1, York >40°C	24,16
TT-D-S	SAT2, Satchwell	24,16
TT-D-T	SAT3, Satchwell	33,35
TT-D-W	SIE1, Siebe	33,35
TT-D-Y	STA2, Landis & Staefa	24,16
TT-D-Z	10K NTC, Carel	28,78
<b>Active Output</b>		
TT-D-CVO	<b>Selectable:</b> 4-20mA/0-10Vdc <b>Output ranges:</b> -10 to +40°C or -10 to +110°C (selectable)	103,53
TT-D-CVO-C	<b>Selectable:</b> 4-20mA/0-10Vdc (custom temp. scaling), Scaled to customer specification in the range of -30 to +70°C	124,80
<b>Suffixes (add to part code)</b>		
-65	65mm Probe length	0,00
-250	250mm Probe length	15,55
<b>Accessory</b>		
TT-DFP	Duct flange plate	21,85

Note: A calibration certificate is available on CVO Types see page 34.

Part code	Description	€
<b>Passive Output</b>		
TT-DA-A	10K3A1, Trend, Cylon, Distech	105,82
TT-DA-B	10K4A1, Andover, Delta Controls	105,82
TT-DA-C	20K6A1, Honeywell	115,03
TT-DA-D	PT100A, Serck	124,21
TT-DA-E	PT1000A, Cylon	124,21
TT-DA-F	Ni1000A, Sauter	133,42
TT-DA-G	Ni1000A/TCR (LAN1), Siemens	133,42
TT-DA-H	SAT1, Satchwell	151,83
TT-DA-K	STA1, Landis & Staefa	151,83
TT-DA-L	TAC1, TAC	115,03
TT-DA-M	2,2K3A1, Johnson Controls	105,82
TT-DA-N	3K3A1, Alerton	105,82
TT-DA-P	30K6A1, Drayton	115,03
TT-DA-Q	50K6A1, Ambiflex	111,67
TT-DA-R	100K6A1, York >40°C	118,45
TT-DA-S	SAT2, Satchwell	151,83
TT-DA-T	SAT3, Satchwell	151,83
TT-DA-W	SIE1, Siebe	115,03
TT-DA-Y	STA2, Landis & Staefa	124,21
TT-DA-Z	10K NTC, Carel	105,82
<b>Active Output</b>		
TT-DA-CVO	4-20mA/0-10Vdc selectable output, <b>Output ranges:</b> -10 to +40°C or -10 to +110°C – selectable	202,45
TT-DA-CVO-C	4-20mA/0-10Vdc selectable output (custom temp. scaling), Scaled to customer specification in the range of -30 to +70°C	223,72
<b>Suffix (add to part code)</b>		
-5M	5m probe length	62,08

Note: A calibration certificate is available on CVO Types see page 34.

**TT-TDA** True Duct Averaging Sensors


Part code	Description	€
<b>Passive Output</b>		
TT-TDA-PT100B	PT100B Thermistor Output	540,10
<b>Active Output</b>		
TT-TDA-CVO	4-20mA/0-10Vdc selectable output <b>Output ranges:</b> -10 to +40°C or -10 to +110°C (selectable)	597,08
TT-TDA-CVO-C	4-20mA/0-10Vdc selectable output (custom temp. scaling), Scaled to customer specification in the range of -30 to +70°C	652,88

Note: A calibration certificate is available on CVO Types see page 34.

**TT-O** Outside Air Sensors

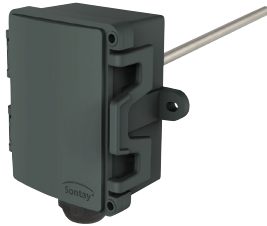

Part code	Description	€
<b>Passive Output</b>		
TT-O-A	10K3A1, Trend, Cylon, Distech	19,54
TT-O-B	10K4A1, Andover, Delta Controls	19,54
TT-O-C	20K6A1, Honeywell	21,85
TT-O-D	PT100A, Serck	24,16
TT-O-E	PT1000A, Cylon	24,16
TT-O-F	Ni1000A, Sauter	26,45
TT-O-G	Ni1000A/TCR (LAN1), Siemens	32,59
TT-O-H	SAT1, Satchwell	31,06
TT-O-K	STA1, Landis & Staefa	31,06
TT-O-L	TAC1, TAC	21,85
TT-O-M	2,2K3A1, Johnson Controls	19,54
TT-O-N	3K3A1, Alerton	19,54
TT-O-P	30K6A1, Drayton	21,85
TT-O-Q	50K6A1	21,85
TT-O-R	100K6A1, York >40°C	21,85
TT-O-S	SAT2, Satchwell	31,06
TT-O-T	SAT3, Satchwell	31,06
TT-O-V	SAT4, Satchwell	31,06
TT-O-W	SIE1, Siebe	21,85
TT-O-Y	STA2, Landis & Staefa	26,45
TT-O-Z	10K NTC, Carel	21,85
<b>Active Output</b>		
TT-O-CVO	<b>Selectable:</b> 4-20mA/0-10Vdc <b>Output ranges:</b> -10 to +40°C or -10 to +110°C – selectable	103,53
TT-O-CVO-C	<b>Selectable:</b> 4-20mA/0-10Vdc (custom temp.), Scaled to customer specification in the range of -30 to +70°C	124,80

Note: A calibration certificate is available on CVO Types see page 34.

**TT-OR** Outside Air Sensors with Radiation Shield


Part code	Description	€
<b>Passive Output</b>		
TT-OR-A	10K3A1, Trend, Cylon, Distech	42,56
TT-OR-B	10K4A1, Andover, Delta Controls	42,56
TT-OR-C	20K6A1, Honeywell	44,85
TT-OR-D	PT100A, Serck	47,16
TT-OR-E	PT1000A, Cylon	47,16
TT-OR-F	Ni1000A, Sauter	49,49
TT-OR-G	Ni1000A/TCR (LAN1), Siemens	51,93
TT-OR-H	SAT1, Satchwell	54,06
TT-OR-K	STA1, Landis & Staefa	54,06
TT-OR-L	TAC1, TAC	44,85
TT-OR-M	2,2K3A1, Johnson Controls	42,56
TT-OR-N	3K3A1, Alerton	42,56
TT-OR-P	30K6A1, Drayton	44,85
TT-OR-Q	50K6A1, Ambiflex	44,85
TT-OR-R	100K6A1, York >40°C	44,85
TT-OR-S	SAT2, Satchwell	54,06
TT-OR-T	SAT3, Satchwell	54,06
TT-OR-V	SAT4, Satchwell	54,06
TT-OR-W	SIE1, Siebe	44,85
TT-OR-Y	STA2, Landis & Staefa	49,47
TT-OR-Z	10K NTC, Carel	44,85
<b>Active Output</b>		
TT-OR-CVO	4-20mA/0-10Vdc selectable output <b>Output ranges:</b> -10 to +40°C or -10 to +110°C – selectable	131,14
TT-OR-CVO-C	4-20mA/0-10Vdc selectable output (custom temp. scaling), Scaled to customer specification in the range of -30 to +70°C	152,41

Note: A calibration certificate is available on CVO Types see page 34.

**TT-I Immersion Sensors**


Part code	Description	€
<b>Passive Output</b>		
TT-I-A	10K3A1, Trend, Cylon, Distech	24,16
TT-I-B	10K4A1, Andover, Delta Controls	24,16
TT-I-C	20K6A1, Honeywell	26,45
TT-I-D	PT100A, Serck	28,78
TT-I-E	PT1000A, Cylon	28,78
TT-I-F	Ni1000A, Sauter	31,06
TT-I-G	Ni1000A/TCR (LAN1), Siemens	35,15
TT-I-H	SAT1, Satchwell	35,66
TT-I-L	TAC1, TAC	26,45
TT-I-M	2,2K3A1, Johnson Controls	24,16
TT-I-N	3K3A1, Alerton	24,16
TT-I-P	30K6A1, Drayton	26,45
TT-I-Q	50K6A1	26,45
TT-I-R	100K6A1, York >40°C	26,45
TT-I-S	SAT2, Satchwell	35,66
TT-I-T	SAT3, Satchwell	35,66
TT-I-W	SIE1, Siebe	26,45
TT-I-Y	STA2, Landis & Staefa	31,06
TT-I-Z	10K NTC, Carel	26,45
<b>Active Output</b>		
TT-I-CVO	<b>Selectable:</b> 4-20mA/0-10Vdc <b>Output ranges:</b> -10 to +40°C or -10 to +110°C – selectable	105,82
TT-I-CVO-C	<b>Selectable:</b> 4-20mA/0-10Vdc (custom temp. scaling), Scaled to customer specification in the range of -30 to +70°C	127,09
<b>Suffixes (add to part code)</b>		
-65	65mm probe length	0,00
-100	100mm probe length	0,00
-250	250mm probe length	15,55

**TT-IH High Temperature Immersion Sensors**


Part code	Description	€
<b>Passive Output (150mm Probe)</b>		
TT-IH-D	PT100A Sensor	150,35
TT-IH-E	PT1000A Sensor	157,52
<b>Active Output (150mm Probe)</b>		
TT-IH-CVO	4-20mA/0-10Vdc selectable output <b>Output ranges:</b> -10 to +40°C, -10 to +110°C, -10 to +160°C or 0 to 400°C – selectable	210,03
TT-IH-CVO-C	4-20mA/0-10Vdc selectable output (custom temp. scaling), Scaled to customer specification in the range of -10 to +400°C	222,82
<b>Suffix (add to part code)</b>		
-250	250mm probe length	52,93
<b>Accessory</b>		
TT-DFP	Duct flange plate	21,85

**Note:** A calibration certificate is available on CVO Types see page 34.

## TT-C

## Clamp-on Sensors



Part code	Description	€
<b>Passive Output</b>		
TT-C-A	10K3A1, Trend, Cylon, Distech	27,29
TT-C-B	10K4A1, Andover, Delta Controls	27,29
TT-C-C	20K6A1, Honeywell	27,62
TT-C-D	PT100A, Serck	29,91
TT-C-E	PT1000A, Cylon	32,25
TT-C-F	Ni1000A, Sauter	32,20
TT-C-G	Ni1000A/TCR (LAN1), Siemens	32,20
TT-C-H	SAT1, Satchwell	36,79
TT-C-L	TAC1, TAC	27,62
TT-C-M	2,2K3A1, Johnson Controls	25,32
TT-C-N	3K3A1, Alerton	25,32
TT-C-P	30K6A1, Drayton	27,62
TT-C-Q	50K6A1	27,62
TT-C-R	100K6A1, York >40°C	27,62
TT-C-S	SAT2, Satchwell	36,79
TT-C-T	SAT3, Satchwell	36,79
TT-C-W	SIE1, Siebe	27,62
TT-C-Y	STA2, Landis & Staefa, Distech	32,20
TT-C-Z	10K NTC, Carel	27,62
<b>Active Output</b>		
TT-C-CVO	<b>Selectable:</b> 4-20mA/0-10Vdc <b>Output ranges:</b> -10 to +40°C or -10 to +110°C (selectable)	103,53
TT-C-CVO-C	<b>Selectable:</b> 4-20mA/0-10Vdc (custom temp. scaling), Scaled to customer specification in the range of -30 to +70°C	124,80
<b>Suffix (add to part code)</b>		
-5M	5m cable length	3,91
<b>Accessory</b>		
BAND	Additional Metal Band	2,86

## TT-554

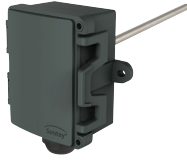
## Remote Probe Sensors



Part code	Description	€
<b>Passive Output</b>		
TT-554-A	10K3A1, Trend, Cylon, Distech	18,40
TT-554-B	10K4A1, Andover, Delta Controls	18,40
TT-554-C	20K6A1, Honeywell	20,69
TT-554-D	PT100A, Serck	23,02
TT-554-E	PT1000A, Cylon	23,02
TT-554-F	Ni1000A, Sauter	25,32
TT-554-G	Ni1000A/TCR (LAN1), Siemens	25,32
TT-554-L	TAC1, TAC	20,69
TT-554-M	2,2K3A1, Johnson Controls	18,40
TT-554-P	30K6A1, Drayton	20,69
TT-554-Z	10K NTC, Carel	20,69
<b>Active Output</b>		
TT-554-CVO	4-20mA/0-10Vdc selectable output * <b>Output ranges:</b> -10 to +40°C or -10 to +110°C (selectable)	108,01
TT-554-CVO-C	<b>Selectable:</b> 4-20mA/0-10Vdc selectable output (custom temp. scaling) *, Scaled to customer specification in the range of -10 to +60°	121,36
<b>Suffix (add to part code)</b>		
-5M	5 meter cable length	4,04
-65	65mm probe length	0,00
-250	250mm probe length	15,04
-LSZH	Low Smoke Zero Halogen option	6,31
<b>Accessories</b>		
TT-DFP	Duct flange plate	21,85
TT-PO-521	Stainless steel immersion pocket	17,85

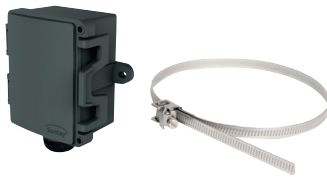
**Note:** Custom lengths available.

- \* These units are supplied with the transmitter in the plant housing.
- A calibration certificate is available on CVO Types see page 34.

**TT-x-U**
**Active Sensors 3-Wire 4-20mA/0-10Vdc**
**Duct**

**Outside**

**Outside with Radiation Shield**

**Immersion**

**Clamp-on**

**Flying Lead**


Part code	Description	€
<b>Passive Output</b>		
TT-D-UN	Active Duct Sensor	66,12
TT-O-UN	Active Outside Air Sensor	72,00
TT-OR-UN	Active Outside Air Sensor with Rad. Shield	80,20
TT-I-UN	Active Immersion Sensor	69,15
TT-C-UN	Active Clamp-on Sensor	78,59
TT-555-UN	Active Flying Lead Sensor	68,74
<b>Suffixs (add to part code TT-D &amp; TT-I only)</b>		
-65	65mm Probe Length	0,00
-100	100mm Probe Length	0,00
-250	250mm Probe Length	15,55



## TT-555

## Flying Lead Sensors



Part code	Description	€
<b>Passive Output</b>		
TT-555-A	10K3A1, Trend, Cylon, Distech	10,37
TT-555-B	10K4A1, Andover, Delta Controls	10,37
TT-555-C	20K6A1, Honeywell	12,63
TT-555-D	PT100A, Serck	14,94
TT-555-E	PT1000A, Cylon	14,94
TT-555-F	Ni1000A, Sauter	17,25
TT-555-G	Ni1000A/TCR (LAN1), Siemens	22,13
TT-555-H	SAT1, Satchwell	21,85
TT-555-K	STA1, Landis & Staefa	21,85
TT-555-L	TAC1, TAC	12,63
TT-555-M	2,2K3A1, Johnson Controls	10,37
TT-555-N	3K3A1, Alerton	10,37
TT-555-P	30K6A1, Drayton	12,63
TT-555-Q	50K6A1	12,63
TT-555-R	100K6A1, York >40°C	29,31
TT-555-S	SAT2, Satchwell	21,85
TT-555-T	SAT3, Satchwell	21,85
TT-555-W	SIE1, Siebe	12,63
TT-555-Y	STA2, Landis & Staefa	17,25
TT-555-Z	10K NTC, Carel	12,63
<b>Active Output</b>		
TT-555-CVO	<b>Selectable:</b> 4-20mA/0-10Vdc * <b>Output ranges:</b> -10 to +40°C or -10 to +110°C (selectable)	87,71
TT-555-CVO-C	<b>Selectable:</b> 4-20mA/0-10Vdc (custom temp. scaling) *, Calibration to customer specification in the range of -10 to +60°C	104,11
<b>Suffixes (add to part code)</b>		
-5M **	5m cable length	4,05
-LSZH	Low Smoke Zero Halogen option	6,31
-R	Cap potted (waterproof)	12,66

**Note:** Custom lengths available.

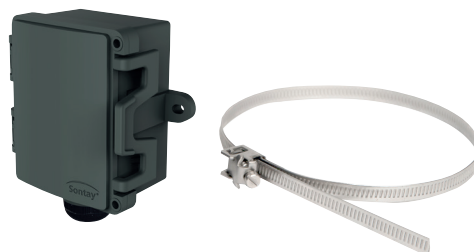
\*These units are supplied with the transmitter in the plant housing.

\*\* Volume Price Breaks breaks available on application.

1. A calibration certificate is available on CVO Types see page 34.

## TT-CD

## Direct Clamp-on Sensors

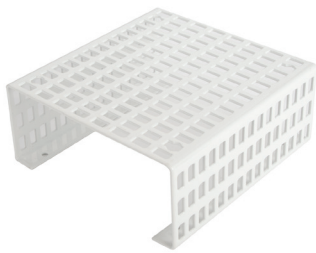


Part code	Description	€
<b>Passive Output</b>		
TT-CD-A	10K3A1, Trend, Cylon, Distech	21,85
TT-CD-B	10K4A1, Andover, Delta Controls	21,85
TT-CD-C	20K6A1, Honeywell	24,16
TT-CD-D	PT100A, Serck	26,45
TT-CD-E	PT1000A, Cylon	26,45
TT-CD-F	Ni1000A, Sauter	28,78
TT-CD-G	Ni1000A/TCR (LAN1), Siemens	31,64
TT-CD-H	SAT1, Satchwell	33,35
TT-CD-L	TAC1, TAC	24,16
TT-CD-M	2,2K3A1, Johnson Controls	21,85
TT-CD-N	3K3A1, Alerton	21,85
TT-CD-P	30K6A1, Drayton	24,16
TT-CD-Q	50K6A1	24,16
TT-CD-R	100K6A1, York >40°C	24,16
TT-CD-S	SAT2, Satchwell	33,35
TT-CD-T	SAT3, Satchwell	33,35
TT-CD-W	SIE1, Siebe	24,16
TT-CD-Y	STA2, Landis & Staefa	28,78
TT-CD-Z	10K NTC, Carel	24,16
<b>Active Output</b>		
TT-CD-CVO	<b>Selectable:</b> 4-20mA/0-10Vdc <b>Output ranges:</b> -10 to +40°C or -10 to +110°C (selectable)	100,07
TT-CD-CVO-C	<b>Selectable:</b> 4-20mA/0-10Vdc (custom temp. scaling), Calibration to customer specification in the range of -30 to +70°C	121,36
<b>Accessory</b>		
BAND	Additional Metal Band	2.86

**Note:** 1. A calibration certificate is available on CVO Types see page 34.

**TT-BBE External Black Bulb Sensors**


Part code	Description	€
<b>Passive Output</b>		
TT-BBE-A	10K3A1, Trend, Cylon, Distech	57,50
TT-BBE-B	10K4A1, Andover, Delta Controls	57,50
TT-BBE-C	20K6A1, Honeywell	59,84
TT-BBE-D	PT100A, Serck	62,12
TT-BBE-E	PT1000A, Cylon	62,12
TT-BBE-F	Ni1000A, Sauter	64,41
TT-BBE-G	Ni1000A/TCR (LAN1), Siemens	64,41
TT-BBE-H	SAT1, Satchwell	69,03
TT-BBE-K	STA1, Landis & Staefa	69,03
TT-BBE-L	TAC1, TAC	59,84
TT-BBE-M	2,2K3A1, Johnson Controls	57,50
TT-BBE-N	3K3A1, Alerton	57,50
TT-BBE-P	30K6A1, Drayton	59,84
TT-BBE-Q	50K6A1, Ambiflex	59,84
TT-BBE-S	SAT2, Satchwell	69,03
TT-BBE-T	SAT3, Satchwell	69,03
TT-BBE-W	SIE1, Siebe	69,03
TT-BBE-Y	STA2, Landis & Staefa	64,41
TT-BBE-Z	10K NTC, Carel	57,50

**TT-GD Space Sensor Guard**


Part code	Description	€
TT-GD	Space Sensor Guard	67,85

**TT-CAL Calibration**


Part code	Description	€
TT-CAL	3-Point calibration at 15, 25 & 35°C	172,54
TT-CAL-ADP	Additional calibration point, select between 0 & 70°C	57,50

**TT-S Space Sensors**
**TT-S**
**TT-S Setpoint**
**TT-S-ACT**

**Setpoint + LCD Display**

Part code	Description	€
<b>Passive Output</b>		
TT-S-A	10K3A1, Trend, Cylon, Distech	12,05
TT-S-B	10K4A1, Andover, Delta Controls	12,05
TT-S-C	20K6A1, Honeywell	14,39
TT-S-D	PT100A, Serck	17,25
TT-S-E	PT1000A, Cylon	17,25
TT-S-F	Ni1000A, Sauter	20,14
TT-S-G	Ni1000A/TCR (LAN1), Siemens	21,12
TT-S-H	SAT1, Satchwell	25,32
TT-S-K	STA1, Landis & Staefa	25,32
TT-S-L	TAC1, TAC	14,94
TT-S-M	2,2K3A1, Johnson Controls	12,63
TT-S-N	3K3A1, Alerton	12,63
TT-S-P	30K6A1, Drayton	14,94
TT-S-Q	50K6A1	14,94
TT-S-S	SAT2, Satchwell	25,32
TT-S-T	SAT3, Satchwell	25,32
TT-S-W	SIE1, Siebe	14,94
TT-S-Y	STA2, Landis & Staefa	20,14
TT-S-Z	10K NTC, Carel	14,94

**Active Output**

TT-S-ACT	<b>Selectable:</b> 4-20mA/0-10Vdc, output range 0 to 40°C	109,87
TT-S-ACT-TR	<b>Selectable:</b> 4-20mA/0-10Vdc, custom temp. scaling between -20 to +50°C	137,56

**Interface Options \***

-SP	2-wire, 11-1kΩ/0-10Ω setpoint	22,55
-MS	Momentary switch	27,62
-LCD *	Integral display	93,84
-LEDG **	24V Green LED	17,27
-BLK ***	Black housing	

**Accessories**

DECOR	Decorators trim plate	21,25
GASKET	Insulating gasket (pack of 10)	32,20

**Note:**

A calibration certificate is available on -ACT Types see page 34.

\* Interface options are not applicable to 'Volume Price Breaks'.

\*\* Only available on -ACT types

\*\*\* Not available on -ACT types

**TT-BB**

**Black Bulb Sensors**



Part code	Description	€
<b>Passive Output</b>		
TT-BB-A	10K3A1, Trend, Cylon, Distech	35,63
TT-BB-B	10K4A1, Andover, Delta Controls	35,63
TT-BB-C	20K6A1, Honeywell	35,63
TT-BB-D	PT100A, Serck	38,04
TT-BB-E	PT1000A, Cylon	38,04
TT-BB-F	Ni1000A, Sauter	40,45
TT-BB-G	Ni1000A/TCR (LAN1), Siemens	42,49
TT-BB-H	SAT1, Satchwell	45,30
TT-BB-K	STA1, Landis & Staefa	45,30
TT-BB-L	TAC1, TAC	35,63
TT-BB-M	2,2K3A1, Johnson Controls	47,58
TT-BB-N	3K3A1, Alerton	33,22
TT-BB-P	30K6A1, Drayton	35,63
TT-BB-Q	50K6A1	35,63
TT-BB-S	SAT2, Satchwell	45,30
TT-BB-T	SAT3, Satchwell	45,30
TT-BB-W	SIE1, Siebe	35,63
TT-BB-Y	STA2, Landis & Staefa	40,45
TT-BB-Z	10K NTC, Carel	35,63
<b>Interface Options</b>		
-SP	2-wire, 11-1kΩ/0-10Ω setpoint	22,55
-MS	Momentary switch	27,62
-LEDG	24V Green LED	17,27
-BLK *	Black housing	
<b>Accessory</b>		
DECOR	Decorators trim plate	21,25
GASKET	Insulating gasket (pack of 10)	32,20

Note: A Sensor Guard (TT-GD) is available – page 34.  
 \* Plain front, no user interface available (SP/MS/LEDG).

**TT-PO**

**Immersion Sensor Pockets**



Part code	Description	€
<b>65mm Pockets</b>		
TT-PO-521-65	Stainless Steel Immersion Pocket	17,85
<b>100mm Pockets</b>		
TT-PO-521-100	Stainless Steel Immersion Pocket	17,85
<b>150mm Pockets</b>		
TT-PO-521	Stainless Steel Immersion Pocket	17,85
TT-PO-HP	High Performance Stainless Steel Immersion Pocket	39,67
<b>250mm Pockets</b>		
TT-PO-521-250	Stainless Steel Immersion Pocket	34,98
TT-PO-HP-250	High Performance Stainless Steel Immersion Pocket	71,92

**UI-500**

**Interface Options**



Part code	Description	€
UI-500	Custom Made	POA

**UI-AA**

**Alarm Annunciators**



Part code	Description	€
UI-AA-1-F	1-channel Interface Panel	139,54

# Valves & Actuators

## VA Damper Actuators

5Nm Types

8Nm & 15Nm Types

20Nm & 30Nm & Fail Safe



Part code	Description	€
<b>5Nm (44 in/lb) Actuators</b>		
VA-05A-24	24V On/off, raise/lower	100,14
VA-05A-24S	24V On/off, raise/lower with auxiliary switches	120,24
VA-05A-230	230V On/off, raise/lower	104,17
VA-05A-230S	230V On/off, raise/lower with auxiliary switches	133,64
VA-05M-24	24V Modulating	149,46
<b>8Nm (70 in/lb) Actuators</b>		
VA-08A-24	24V On/off, raise/lower	130,31
VA-08A-24S	24V On/off, raise/lower with auxiliary switch	158,48
VA-08A-230	230V On/off, raise/lower	135,75
VA-08A-230S	230V On/off, raise/lower with auxiliary switch	163,53
<b>10Nm Actuators</b>		
VA-10M-24	24V Modulating	177,61
VA-10M-24S	24V Modulating with auxiliary switch	210,82
<b>15Nm (132 in/lb) Actuators</b>		
VA-15A-24	24V On/off, raise/lower	143,91
VA-15A-24S	24V On/off, raise/lower with auxiliary switch	181,64
VA-15A-230	230V On/off, raise/lower	147,43
VA-15A-230S	230V On/off, raise/lower with auxiliary switch	163,53
VA-15M-24	24V Modulating	208,30
VA-15M-24S	24V Modulating with auxiliary switch	241,52
<b>20Nm (177 in/lb) Actuators</b>		
VA-20A-24S	24V On/off, raise/lower with auxiliary switches	225,40
VA-20A-230S	230V On/off, raise/lower with auxiliary switches	245,55
VA-20M-24S	24V Modulating with auxiliary switches	328,06
<b>30Nm (265 in/lb) Actuators</b>		
VA-30A-24	24V On/off, raise/lower	265,68
VA-30A-24S	24V On/off, raise/lower with auxiliary switches	301,07
VA-30A-230S	230V On/off, raise/lower with auxiliary switches	303,93
VA-30M-24S	24V Modulating with auxiliary switches	386,40
<b>Failsafe Actuators (20Nm / 177 in/lb)</b>		
VA-FA-24-N	24V On/off	361,73
VA-FA-24S-N	24V On/off with auxiliary switches	402,70
VA-FA-230-N	230V On/off	418,92
VA-FA-230S-N	230V On/off with auxiliary switches	458,62
VA-FM-24-N	24V Modulating	473,28
VA-FM-24S-N	24V Modulating with auxiliary switches	514,51

## VR-F 3-port Flanged Iron Rotary Shoe Valves



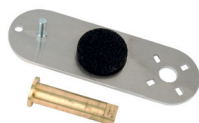
Actuator Selection				
Valve Body	24V R/L On/Off	230V R/L On/Off	24V Mod.	Linkage
VR-F-P3-F50	VA-05A-24x	VA-05A-230x	VA-05M-24	VR-LKN-2
Others	VA-15A-24x	VA-15A-230x	VA-15M-24x	VR-LKN-2

Part code	Description	€
<b>3-port, Flanged Valves</b>		
VR-F-P3-F50-K60	50mm, 60 Kvs Valve	428,54
VR-F-P3-F65-K90	65mm, 90 Kvs	513,19
VR-F-P3-F80-K150	80mm, 150 Kvs	627,97
VR-F-P3-F100-K225	100mm, 225 Kvs	848,83
VR-F-P3-F125-K280	125mm, 280 Kvs	1145,57
VR-F-P3-F150-K400	150mm, 400 Kvs	1525,12
<b>Linkage Kits</b>		
VR-LKN-2	For VA Actuators from 5 to 15Nm	39,12

**VR-G 3-port Screwed Brass Rotary Shoe Valves**

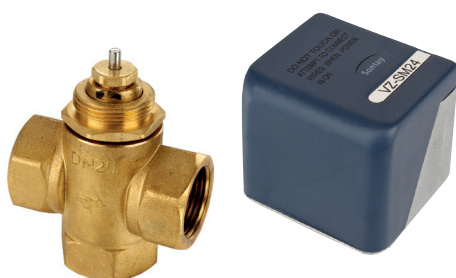

VR-G-LKN-1


**Actuator Selection**

Valve Body	24V R/L On/Off	230V R/L On/Off	24V Mod.	Linkage
All VR-G	VA-05A-24	VA-05A-230x	VA-05M-24	VR-G-LKN-1

Part code	Description	€
<b>3-port, Screwed Valves</b>		
VR-G-01	½" BSP, 0,4 Kvs	Valve 135,15
VR-G-02	½" BSP, 0,63 Kvs	" 135,15
VR-G-03	½" BSP, 1,00 Kvs	" 135,15
VR-G-04	½" BSP, 1,63 Kvs	" 135,15
VR-G-05	½" BSP, 2,5 Kvs	" 115,61
VR-G-06	½" BSP, 4,0 Kvs	" 135,15
VR-G-07	¾" BSP, 2,5 Kvs	" 126,51
VR-G-08	¾" BSP, 4,0 Kvs	" 108,69
VR-G-09	¾" BSP, 6,3 Kvs	" 108,69
VR-G-10	1" BSP, 6,3 Kvs	Valve 138,01
VR-G-11	1" BSP, 10 Kvs	" 117,92
VR-G-12	1¼" BSP, 16 Kvs	" 187,46
VR-G-13	1½" BSP, 25 Kvs	" 224,30
VR-G-14	2" BSP, 40 Kvs	" 269,15
<b>Linkage Kit</b>		
VR-G-LKN-1	For VA 5Nm actuators	62,12

Note: Please refer to page 33 for VA actuators

**VZ Zone Valves and Actuators**


Part code	Description	€
<b>2-port Valves</b>		
VZ-2N-15	½" BSP Zone Valve	33,57
VZ-2N-20	¾" BSP Zone Valve	46,96
VZ-2N-25	1" BSP Zone Valve	61,48
<b>3-port Valves</b>		
VZ-3-15	½" BSP Zone Valve	39,12
VZ-3-20	¾" BSP Zone Valve	55,20
VZ-3-25	1" BSP Zone Valve	73,61
<b>Actuators</b>		
VZ-SM24	24Vac Actuator with auxiliary switch	42,56
VZ-SM230	230Vac Actuator with auxiliary switch	42,56

# Water Detection & Emergency Products

**EP-SW Emergency Stop**

EP-KL

EP-SW-11



Part code	Description	€
EP-KL	Stop Button – Key lock	48,31
EP-SW-11	Stop Button – Twist knob	40,23

**EP-SW-72 Fusible Thermal Link**

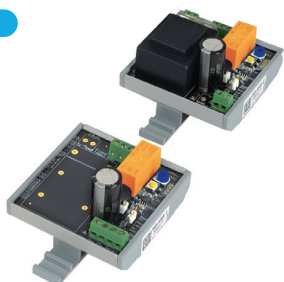

Part code	Description	€
EP-SW-72	Electro-thermal Link	17,85
EP-SW-72-F	Electro-thermal Link – spare fuse	4,60

**EP-FS Fireman's Switches**


Part code	Description	€
EP-FS-1	Fireman's Switch – Red 2-position	60,97
EP-FS-2	Fireman's Switch – Red 3-position	80,51

**WD** Water Leak Detection

**WD-AMX**



**WD-CS**



**WD-PS**



**WD-RS**



Part code	Description	€
<b>Modules</b>		
WD-AMX-1	24Vac/dc Controller with buzzer	111,54
WD-AMX-2	230Vac Controller with buzzer	134,55
<b>Sensors</b>		
WD-CS-2M	Water Cable Sensor, 2m cable, 3m leader	42,56
WD-CS-5M	Water Cable Sensor, 5m cable, 3m leader	60,39
WD-CS-10M	Water Cable Sensor, 10m cable, 3m leader	97,21
WD-CS-15M	Water Cable Sensor, 15m cable, 3m leader	134,00
WD-CS-20M	Water Cable Sensor, 20m cable, 3m leader	170,81
WD-CS-25M	Water Cable Sensor, 25m cable, 3m leader	209,33
WD-PS	Water Point Sensor, 2m	42,56
WD-RS	Rain Sensor with internal heater, 2m leader	109,87
WD-RS-5M	Rain Sensor with internal heater, 5m leader	123,08
<b>Accessory</b>		
WD-FC	Pack of 20 fixing clips for WD-CS	5,77

Note: Custom WD-CS lengths available.

**WD-CPS** Condensation Detection and Prevention Range

**WD-CPS** Condensation Prevention Sensor



Part code	Description	€
WD-CPS	Condensation Prevention Sensor - 2m lead	120,79
WD-CPS-5M	Condensation Prevention Sensor - 5m lead	143,77

**WD-CPS-UN** Condensation Prevention Switch



Part code	Description	€
WD-CPS-UN	Condensation Prevention Switch - 2m lead	100,40





### HEAD OFFICE

Sontay Limited · Four Elms Road · Edenbridge · Kent · TN8 6AB · England

#### TELEPHONE

+44 (0)1732 861200

#### WEBSITE

[www.sontay.com](http://www.sontay.com)

#### EMAIL

[sales@sontay.com](mailto:sales@sontay.com)

#### BUSINESS HOURS

8:30am to 5:00pm GMT

### FRANCE

Sontay Limited · 142, Rue de Rivoli · 75001 · Paris · France

#### TELEPHONE

+33 (0) 1 46 94 62 92

#### EMAIL

[service.clients@sontay.fr](mailto:service.clients@sontay.fr)

#### WEBSITE

[www.sontay.fr](http://www.sontay.fr)

### MIDDLE EAST

Sontay Limited · PO Box 121563 · Sharjah · SAIF Zone · United Arab Emirates

#### TELEPHONE

+971 5636 222 63

#### EMAIL

[sales@sontay.me](mailto:sales@sontay.me)

#### WEBSITE

[www.sontay.com](http://www.sontay.com)

### ITALY

#### TELEPHONE

+39 02 50 033 199

#### EMAIL

[alessandro.cirillo@sontay.com](mailto:alessandro.cirillo@sontay.com)

#### WEBSITE



### SPAIN

#### TELEPHONE

+34 91 903 22 26

#### EMAIL

[alessandro.cirillo@sontay.com](mailto:alessandro.cirillo@sontay.com)

#### WEBSITE



Your Local Distributor: